

PRL GLASS SYSTEMS INC.

Web Site: www.prlglass.com

www.prlaluminum.com

Telephone : (877) 775-25856
 Fax No. : (626) 968-95256

251 Mason Way
 City of industry, C.A.

TITLE **MAX Slider**

details

MAX Slider
 XXO
 bottom rolling
 elevation

ELEVATION 101



SCALE **XXXXX**

DATE **2/22/2011**

DRAFTPERSON **P**



DRAWING NAME

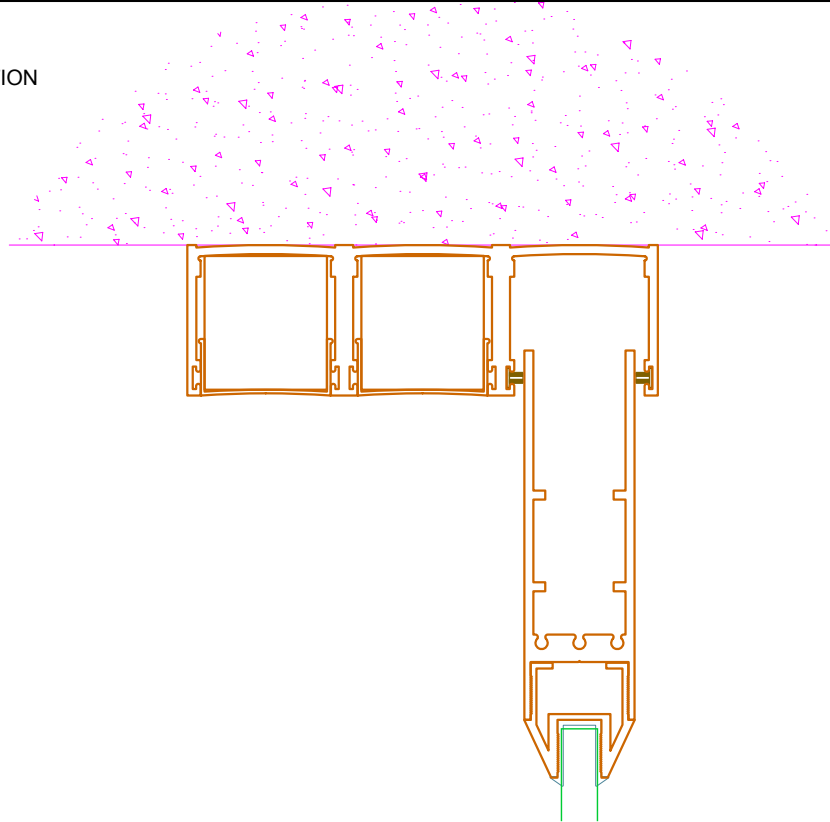
MAX Slider details 1-2 glass.dwg

1
101.A

VERTICAL CUT SECTION
AT DOOR / HEAD



REFERENCE

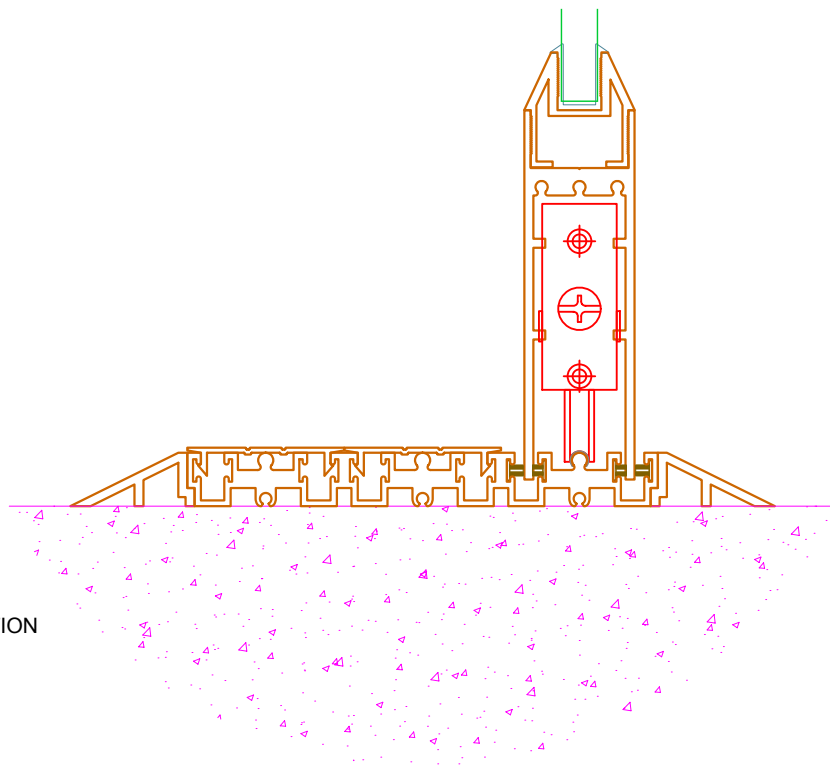


2
101.A

VERTICAL CUT SECTION
AT DOOR / SILL



REFERENCE



PRL GLASS SYSTEMS INC.

Web Site: www.prlglass.com

www.prlaluminum.com

Telephone : (877) 775-25856
Fax No. : (626) 968-95256

251 Mason Way
City of industry, C.A.

TITLE **MAX Slider**
details

MAX Slider
XXO
bottom rolling
vertical section
1/2" tempered glass

101.A



SCALE **XXXXX**

DATE **2/22/2011**

DRAWING NAME
MAX Slider details 1-2 glass.dwg

DRAFTPERSON **P**

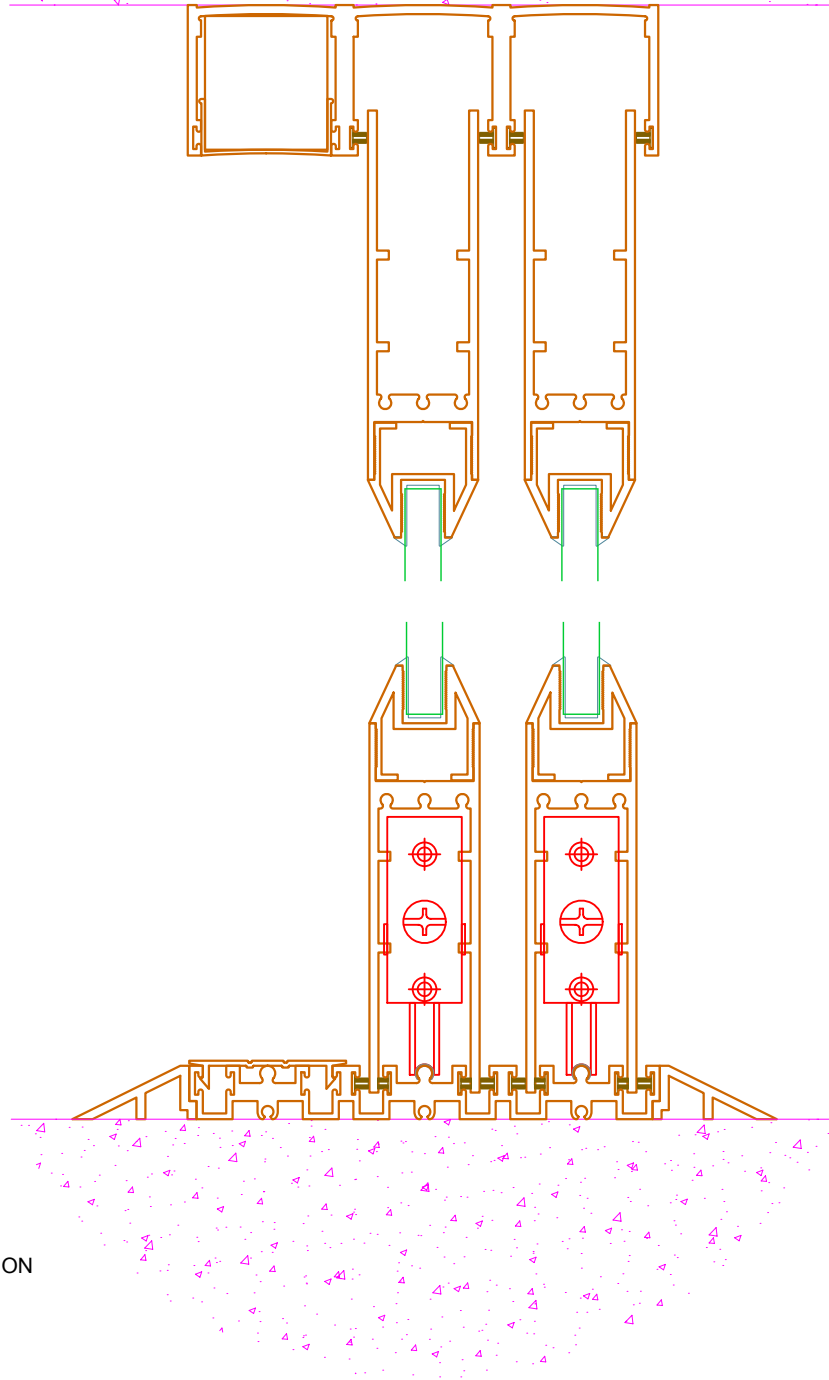


1
101.B

VERTICAL CUT SECTION
AT DOOR / HEAD



REFERENCE



2
101.B

VERTICAL CUT SECTION
AT DOOR / SILL



REFERENCE

PRL GLASS SYSTEMS INC.

Web Site: www.prlglass.com

www.prlaluminum.com

Telephone : (877) 775-25856
Fax No. : (626) 968-95256

251 Mason Way
City of industry, C.A.

TITLE **MAX Slider**
details

MAX Slider
XXO
bottom rolling
vertical section
1/2" tempered glass

101.B



SCALE **XXXXX**

DATE **2/22/2011**

DRAFTPERSON **P**



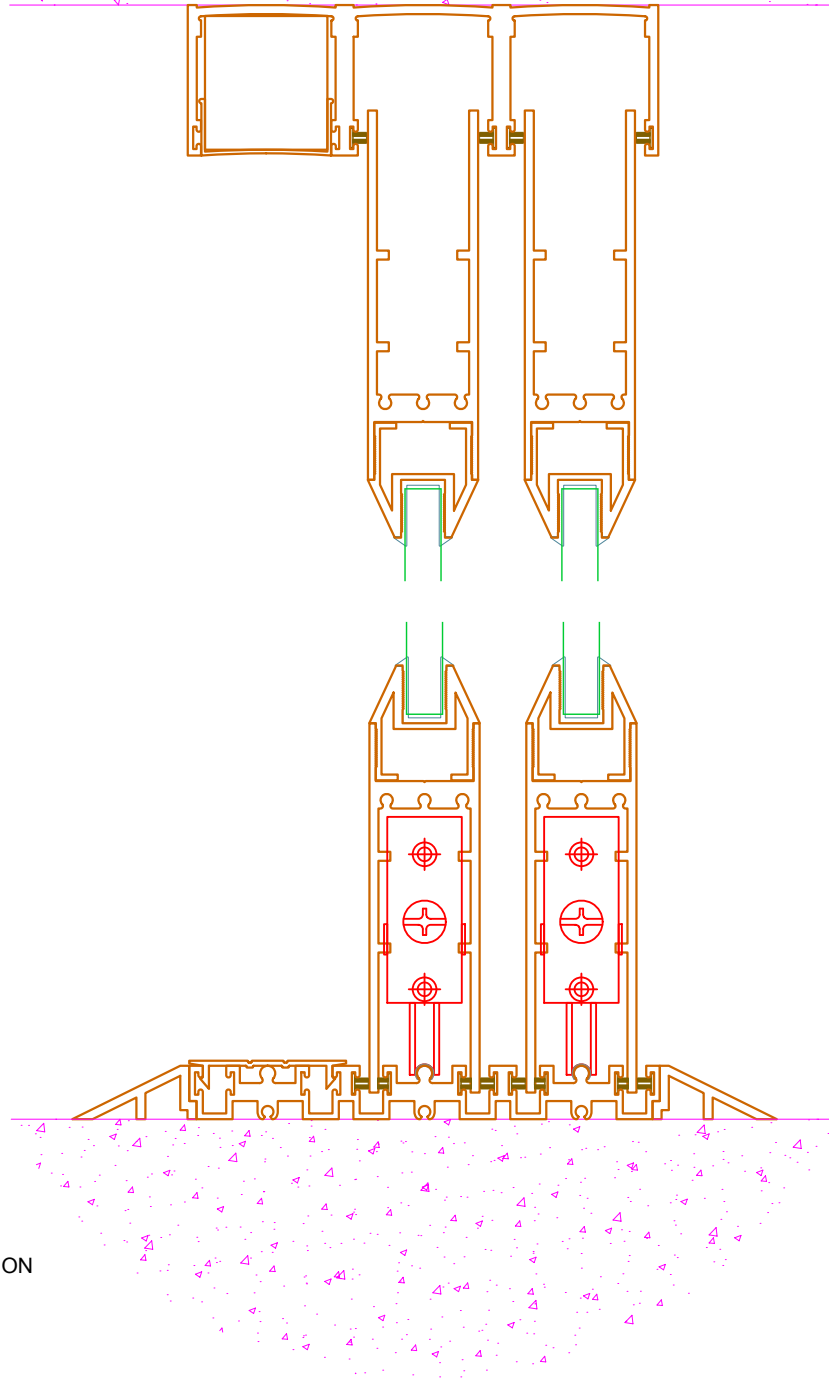
DRAWING NAME
MAX Slider details 1-2 glass.dwg

1
101.C

VERTICAL CUT SECTION
AT SIDELITE / HEAD



REFERENCE



2
101.C

VERTICAL CUT SECTION
AT SIDELITE / SILL



REFERENCE

PRL GLASS SYSTEMS INC.

Web Site: www.prlglass.com

www.prlaluminum.com

Telephone : (877) 775-25856
Fax No. : (626) 968-95256

251 Mason Way
City of industry, C.A.

TITLE **MAX Slider**
details

MAX Slider
XXO
bottom rolling
vertical section
1/2" tempered glass

101.C



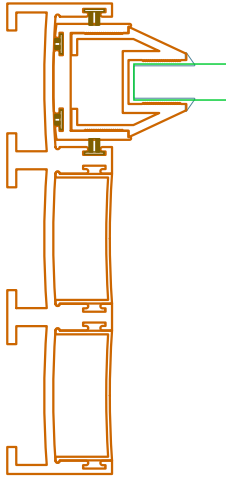
SCALE **XXXXX**

DATE **2/22/2011**

DRAFTPERSON **P**

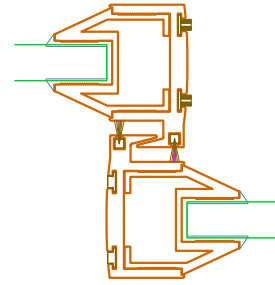


DRAWING NAME
MAX Slider details 1-2 glass.dwg



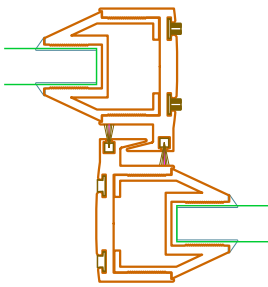
1
101.D HORIZONTAL CUT SECTION
AT DOOR STRIKE

REFERENCE



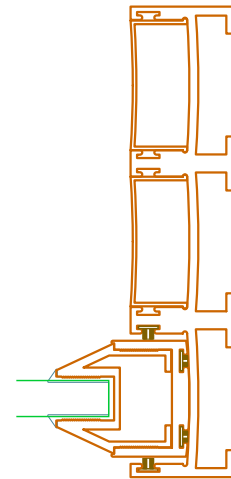
2
101.D HORIZONTAL CUT SECTION
AT DOOR INTERLOCK STYLE

REFERENCE



3
101.D HORIZONTAL CUT SECTION
AT DOOR INTERLOCK STYLE

REFERENCE



4
101.D HORIZONTAL CUT SECTION
AT SIDELITE / JAMB

REFERENCE

PRL GLASS SYSTEMS INC.

Web Site: www.prlglass.com

www.prlaluminum.com

Telephone : (877) 775-25856
Fax No. : (626) 968-95256

251 Mason Way
City of industry, C.A.

TITLE **MAX Slider**
details

MAX Slider
XXO
bottom rolling
vertical section
1/2" tempered glass

101.D



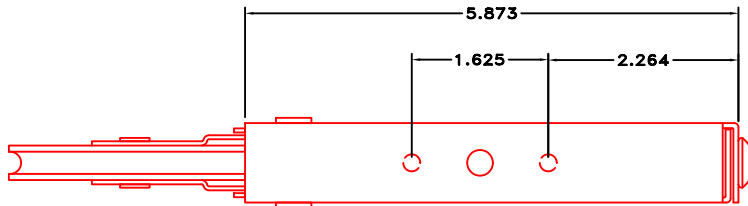
SCALE **XXXXX**

DATE **2/22/2011**

DRAFTPERSON **P**

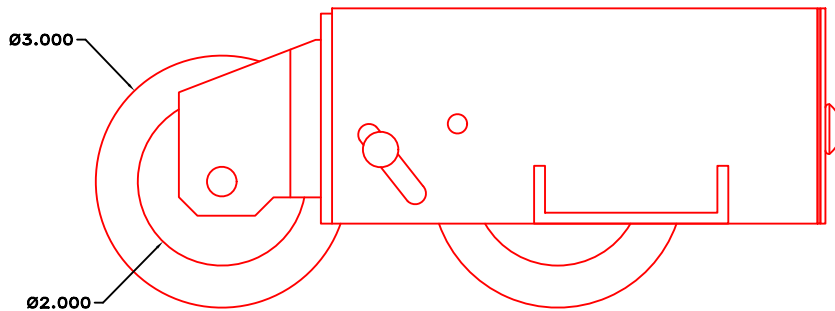


DRAWING NAME
MAX Slider details 1-2 glass.dwg

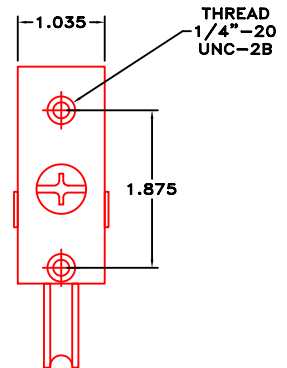


top view

NOTE: Only use this roller
with glazed MAX Slider



front view



side view

PRL GLASS SYSTEMS INC.

Web Site: www.prlglass.com

www.prlaluminum.com

Telephone : (877) 775-25856
Fax No. : (626) 968-95256

251 Mason Way
City of industry, C.A.

TITLE **MAX Slider**

details

SCALE **XXXXX**

DATE **2/22/2011**

DRAFTPERSON **P**



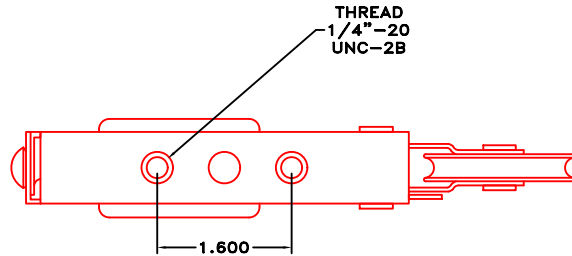
MAX Slider
mammoth
tandem bottom roller

mammoth tandem roller

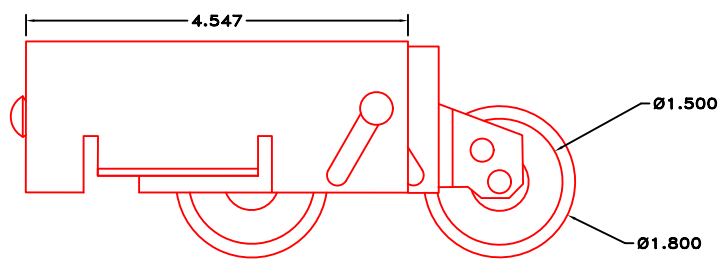
DRAWING NAME
MAX Slider details 1-2 glass.dwg



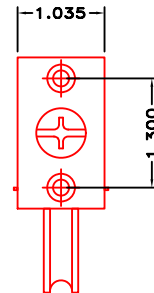
NOTE:
 this roller can only be used
 with MAX Slider screen door, not glazed door



top view



front view



side view

PRL GLASS SYSTEMS INC.

Web Site: www.prlglass.com

www.prlaluminum.com

Telephone : (877) 775-25856
 Fax No. : (626) 968-95256

251 Mason Way
 City of industry, C.A.

TITLE **MAX Slider**

details

SCALE **XXXXX**

DATE **2/22/2011**

DRAFTPERSON **P**



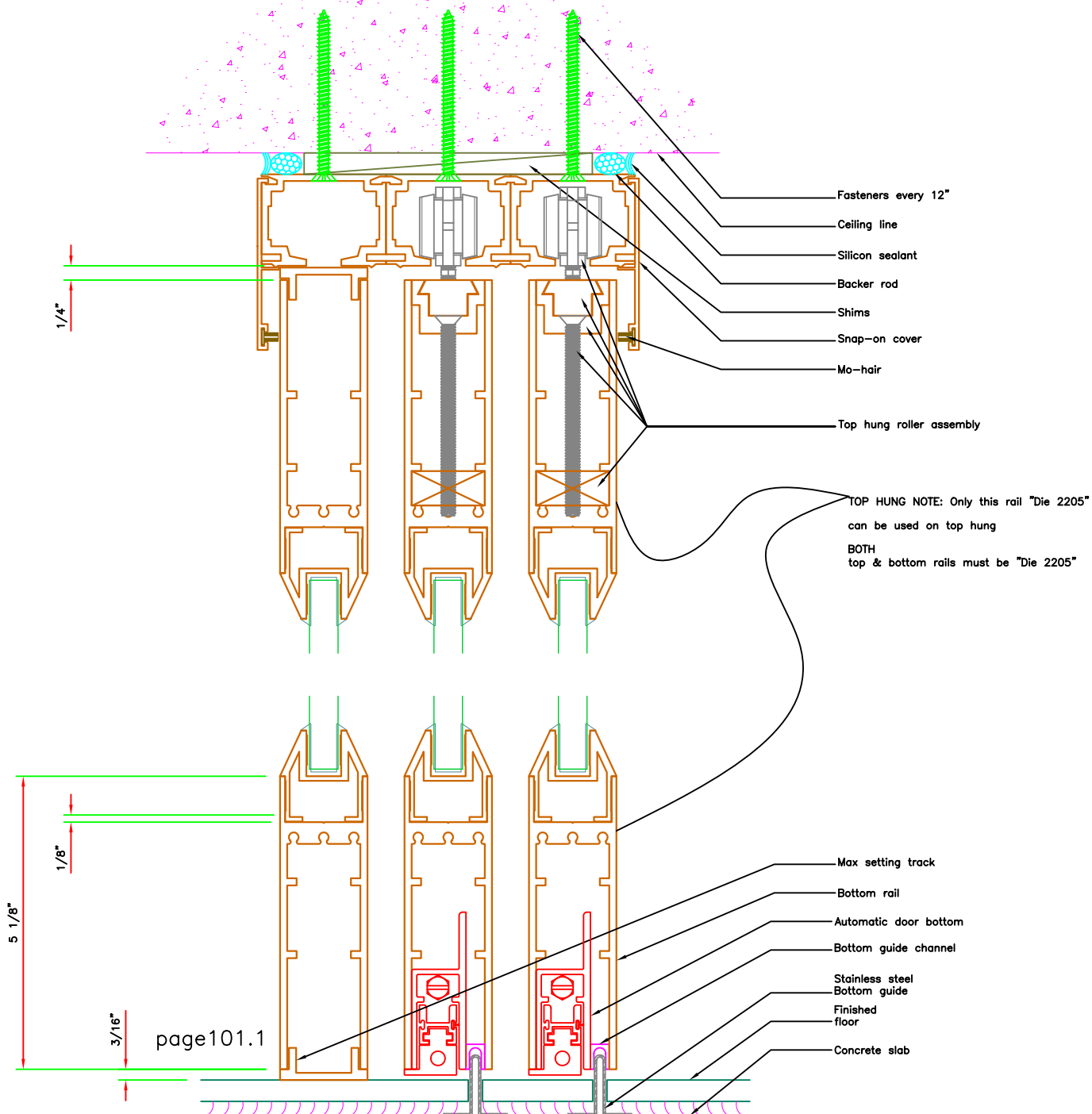
MAX Slider
 optional
 tandem bottom roller

standard tandem roller

DRAWING NAME

MAX Slider details 1-2 glass.dwg





PRL GLASS SYSTEMS INC.

Web Site: www.prlglass.com

www.prlaluminum.com

Telephone : (877) 775-25856
 Fax No. : (626) 968-95256

251 Mason Way
 City of industry, C.A.

TITLE **MAX Slider**
details

MAX Slider
 XXO
 top hung
 vertical section
 1/2" tempered glass

101.1



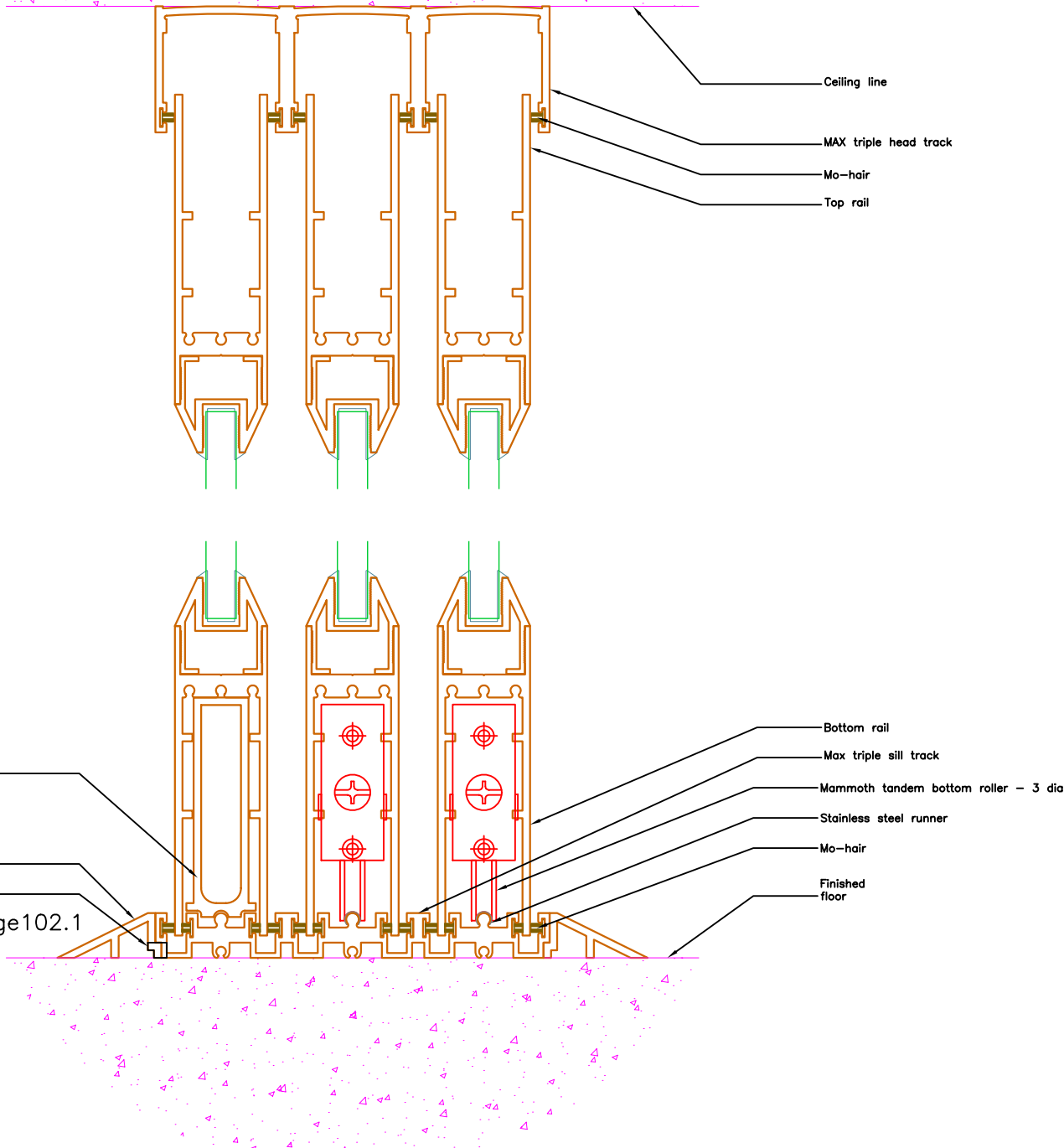
SCALE **XXXXX**

DATE **2/22/2011**

DRAWING NAME
MAX Slider details 1-2 glass.dwg

DRAFTPERSON **P**





PRL GLASS SYSTEMS INC.

Web Site: www.prlglass.com

www.prlaluminum.com

Telephone : (877) 775-25856
Fax No. : (626) 968-95256

251 Mason Way
City of industry, C.A.

TITLE **MAX Slider**
details

MAX Slider
XXO
bottom rolling
vertical section
1/2" tempered glass

102.1



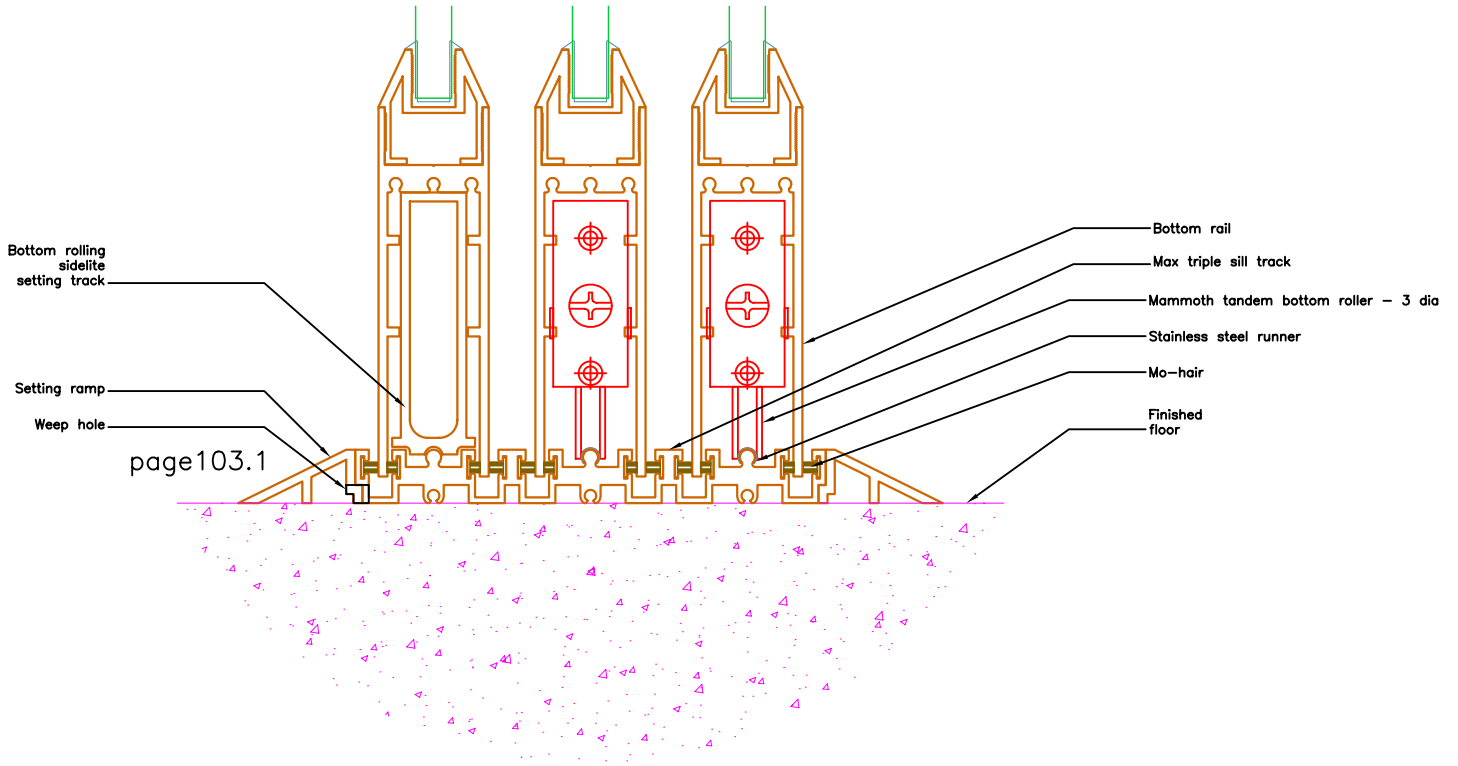
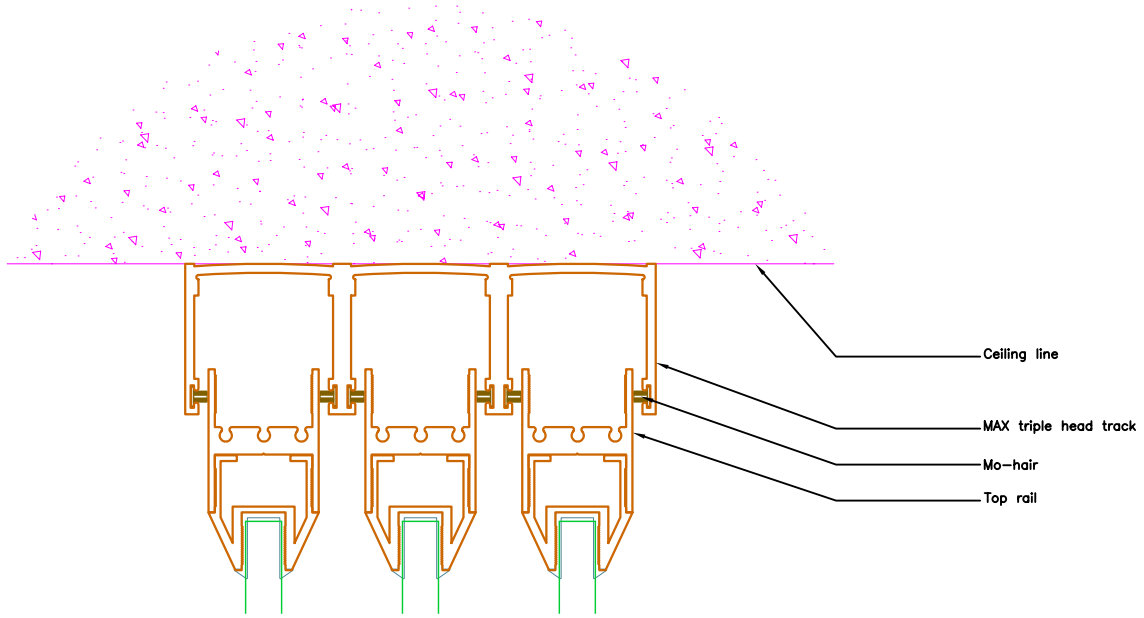
SCALE **XXXXX**

DATE **2/22/2011**

DRAWING NAME
MAX Slider details 1-2 glass.dwg

DRAFTPERSON **P**





PRL GLASS SYSTEMS INC.

Web Site: www.prlglass.com

www.prlaluminum.com

Telephone : (877) 775-25856
Fax No. : (626) 968-95256

251 Mason Way
City of industry, C.A.

TITLE **MAX Slider**

details

MAX Slider
XXO

bottom rolling
vertical section
1/2" tempered glass

103.1



SCALE **XXXXX**

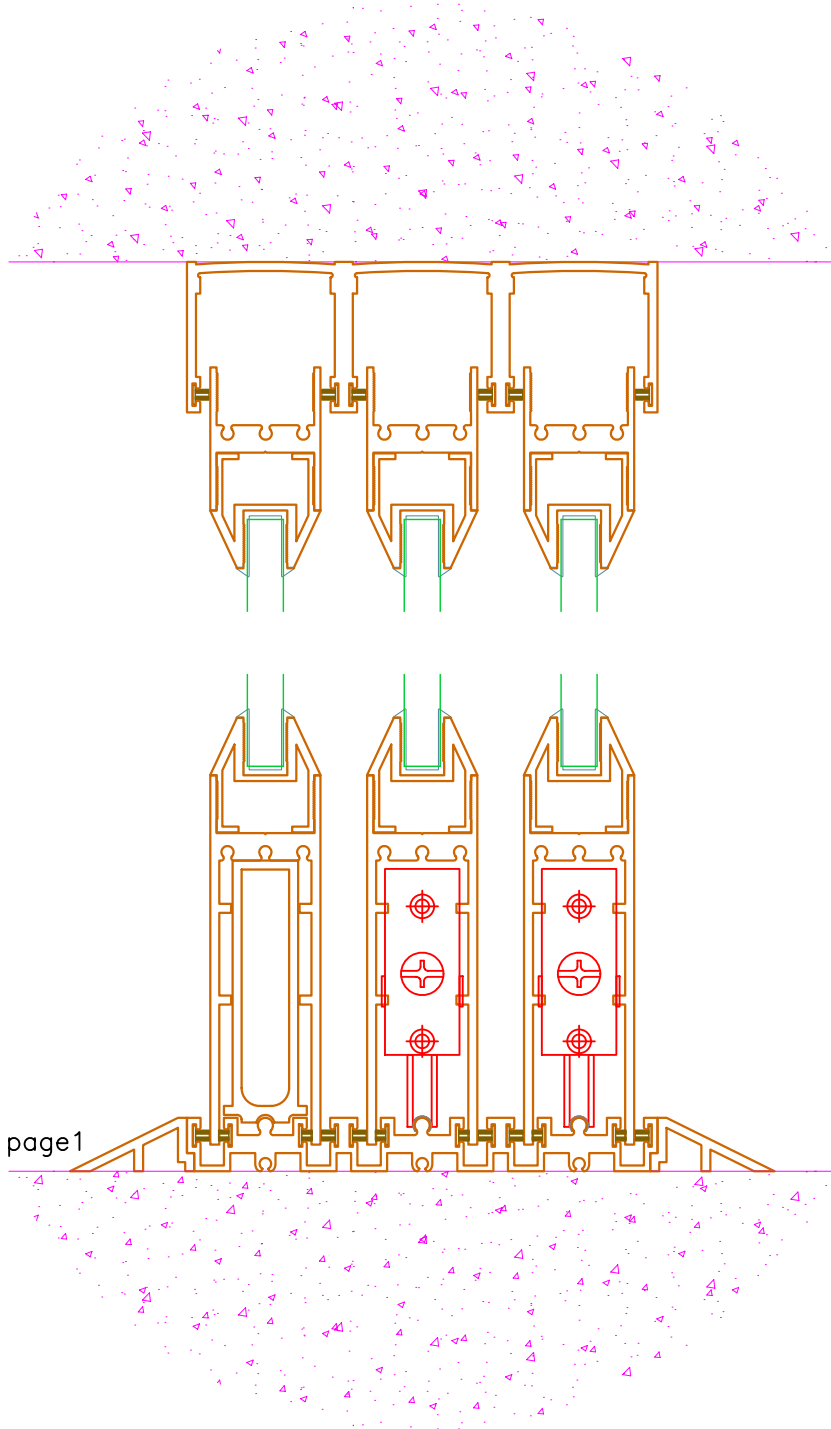
DATE **2/22/2011**

DRAFTPERSON **P**



DRAWING NAME

MAX Slider details 1-2 glass.dwg



PRL GLASS SYSTEMS INC.

Web Site: www.prlglass.com

www.prlaluminum.com

Telephone : (877) 775-25856
Fax No. : (626) 968-95256

251 Mason Way
City of industry, C.A.

TITLE **MAX Slider**

details

MAX Slider
XXO

bottom rolling
vertical section
1/2" tempered glass

02-22-11

PRL GLASS SYSTEMS INC.



SCALE **XXXXX**

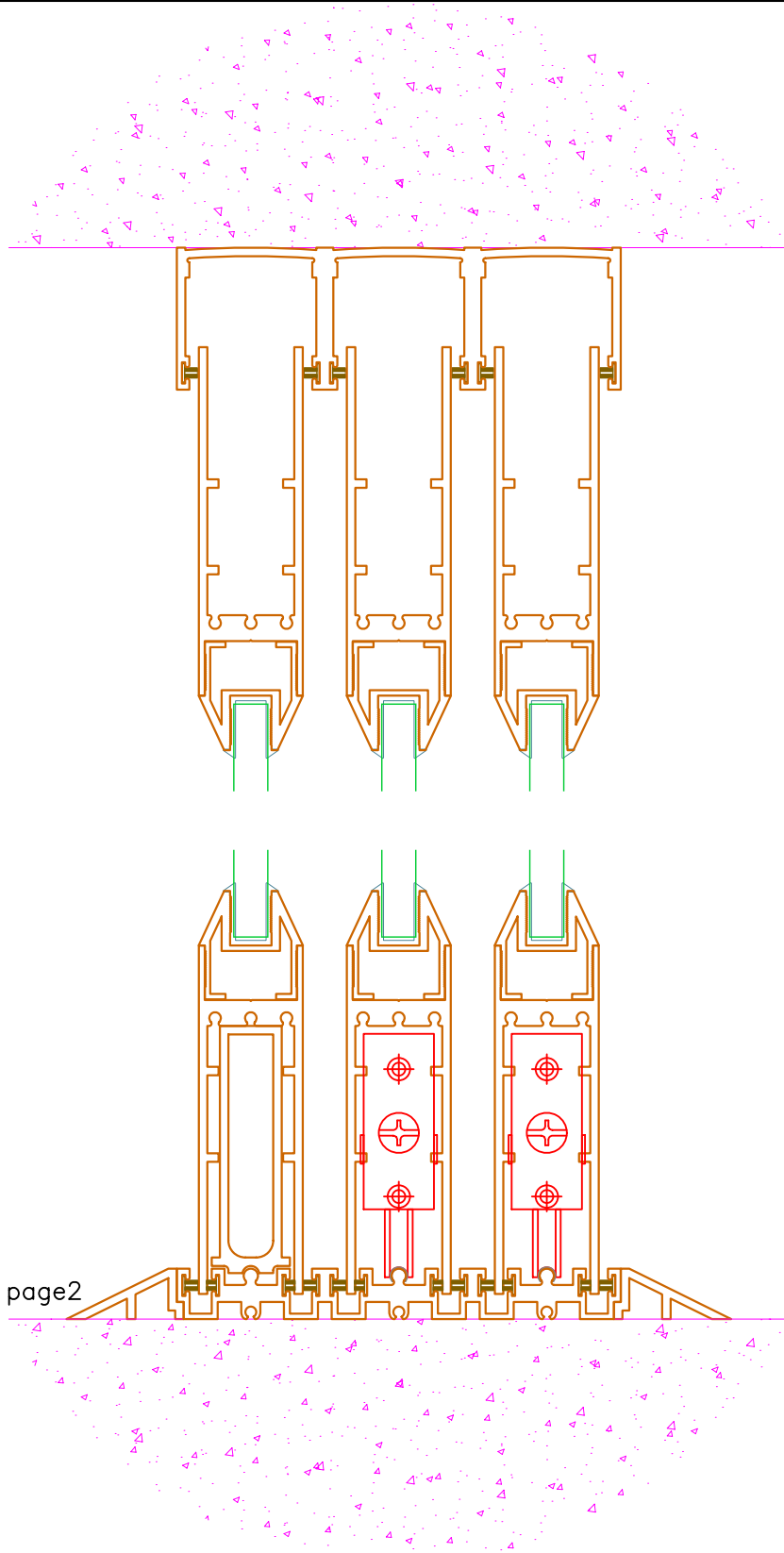
DATE **2/22/2011**

DRAWING NAME

MAX Slider details 1-2 glass.dwg

DRAFTERPERSON **P**





PRL GLASS SYSTEMS INC.

Web Site: www.prlglass.com

www.prlaluminum.com

Telephone : (877) 775-25856
 Fax No. : (626) 968-95256

251 Mason Way
 City of industry, C.A.

TITLE **MAX Slider**
details

MAX Slider
 XXO
 bottom rolling
 vertical section
 1/2" tempered glass

02-22-11



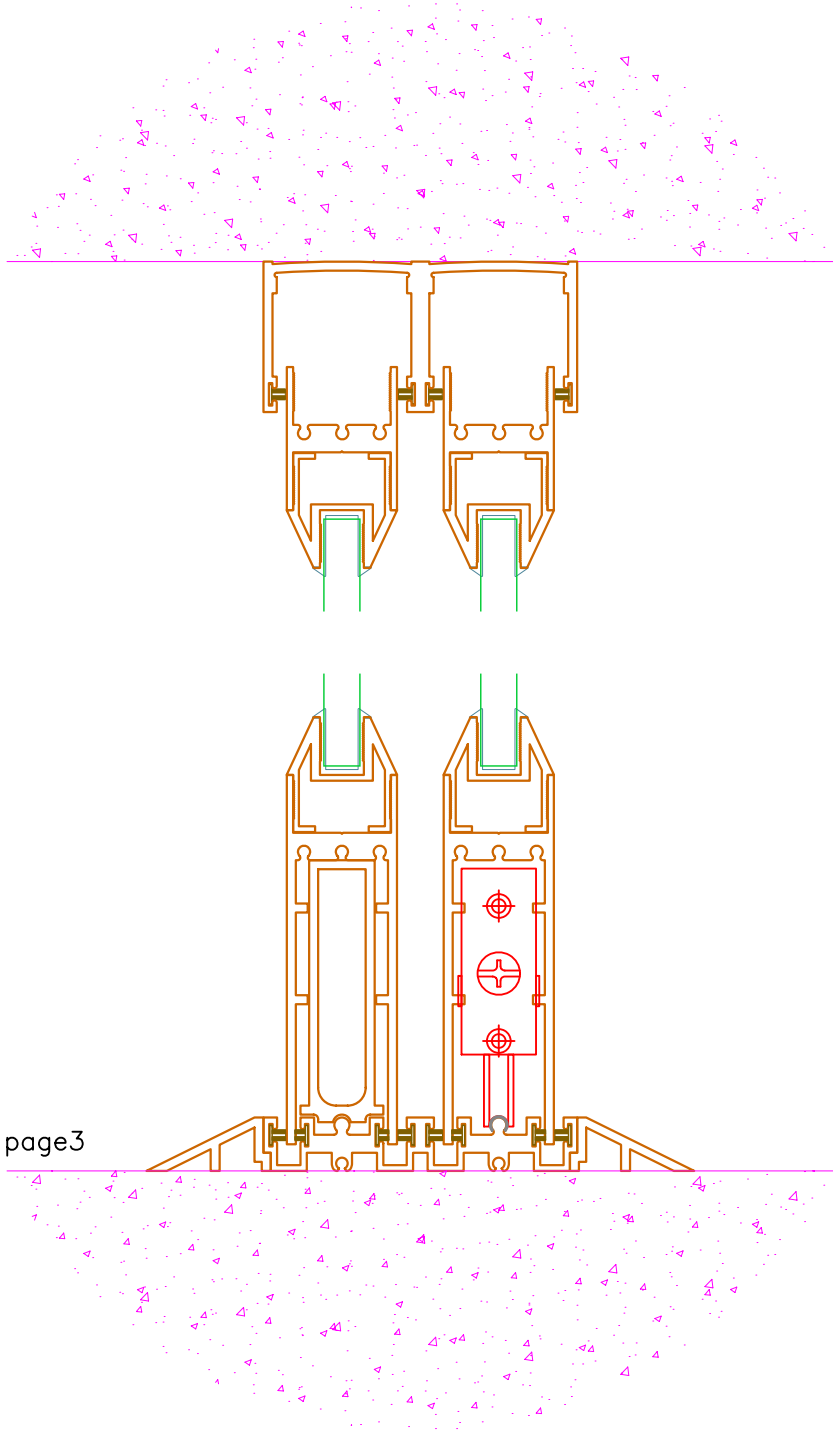
SCALE **XXXXX**

DATE **2/22/2011**

DRAFTPERSON **P**



DRAWING NAME
MAX Slider details 1-2 glass.dwg



page3

PRL GLASS SYSTEMS INC.

Web Site: www.prlglass.com

www.prlaluminum.com

Telephone : (877) 775-25856
Fax No. : (626) 968-95256

251 Mason Way
City of industry, C.A.

TITLE **MAX Slider**

details

MAX Slider
XO
bottom rolling
vertical section
1/2" tempered glass

02-22-11



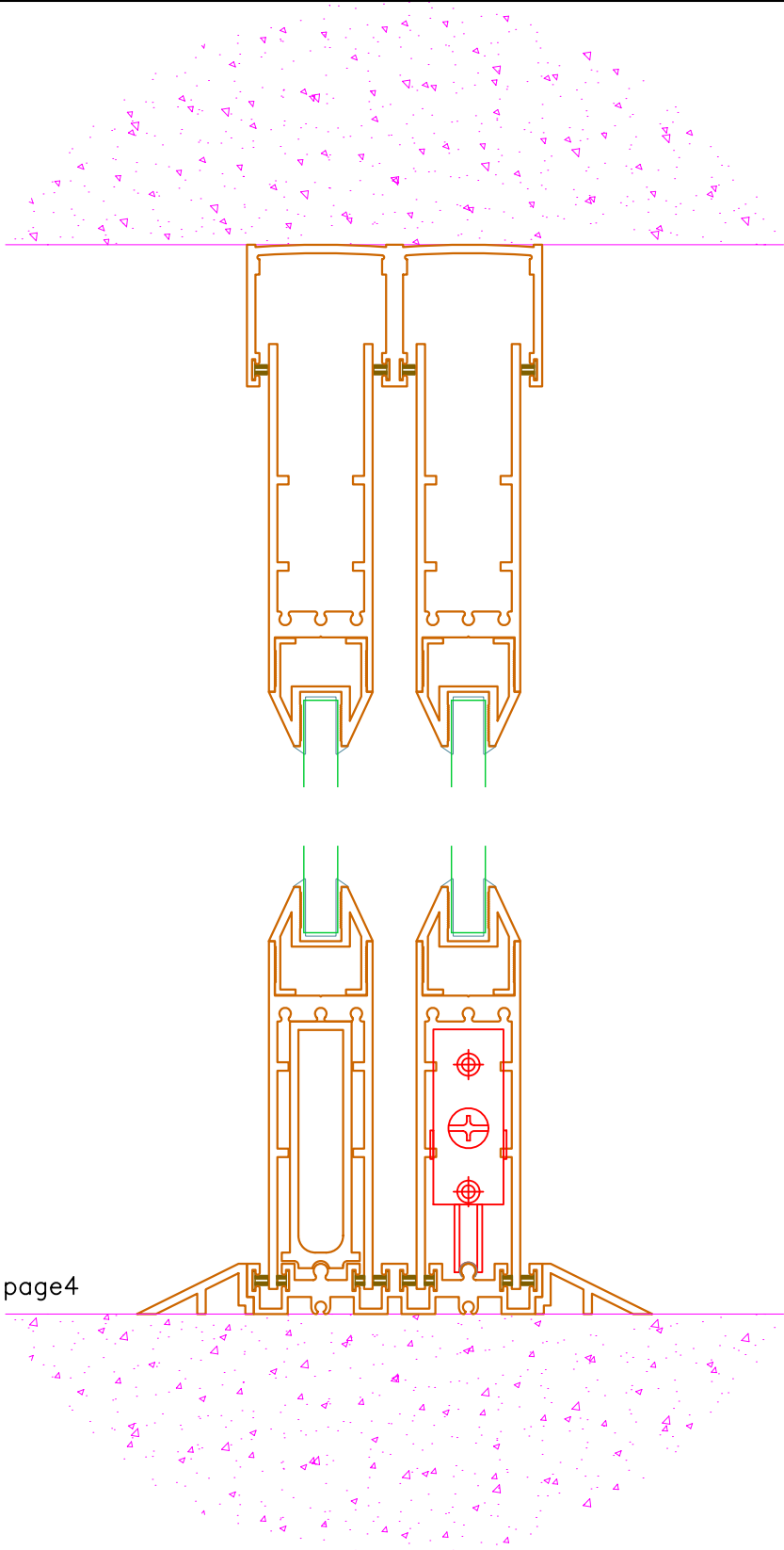
SCALE **XXXXX**

DATE **2/22/2011**

DRAWING NAME
MAX Slider details 1-2 glass.dwg

DRAFTPERSON **P**





PRL GLASS SYSTEMS INC.

Web Site: www.prlglass.com

www.prlaluminum.com

Telephone : (877) 775-25856
 Fax No. : (626) 968-95256

251 Mason Way
 City of industry, C.A.

TITLE **MAX Slider**

details

MAX Slider
 XO
 bottom rolling
 vertical section
 1/2" tempered glass

02-22-11



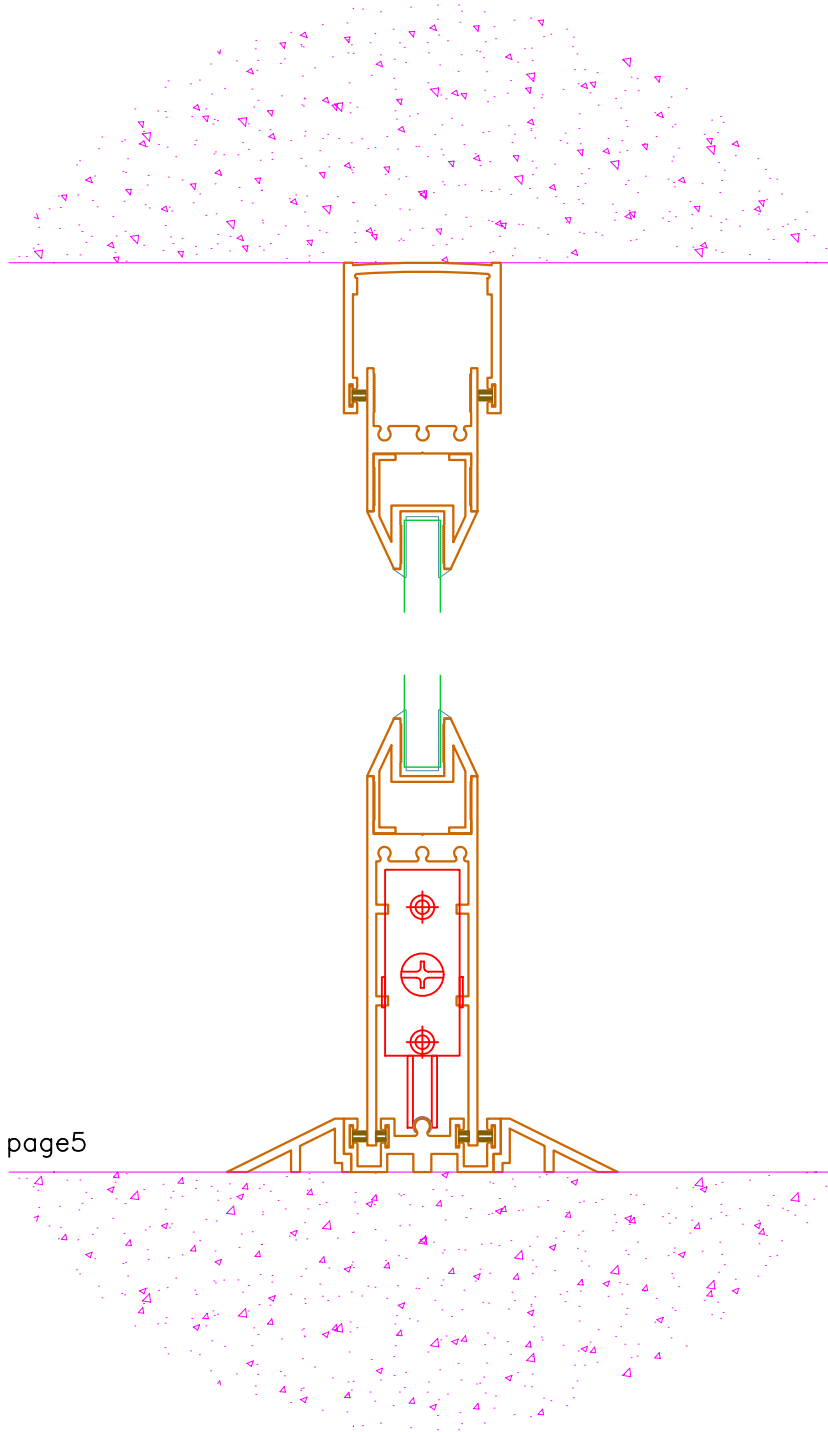
SCALE **XXXXX**

DATE **2/22/2011**

DRAWING NAME
MAX Slider details 1-2 glass.dwg

DRAFTERPERSON **P**





PRL GLASS SYSTEMS INC.

Web Site: www.prlglass.com

www.prlaluminum.com

Telephone : (877) 775-25856
 Fax No. : (626) 968-95256

251 Mason Way
 City of industry, C.A.

TITLE **MAX Slider**

details

MAX Slider
 X
 bottom rolling
 vertical section
 1/2" tempered glass

02-22-11



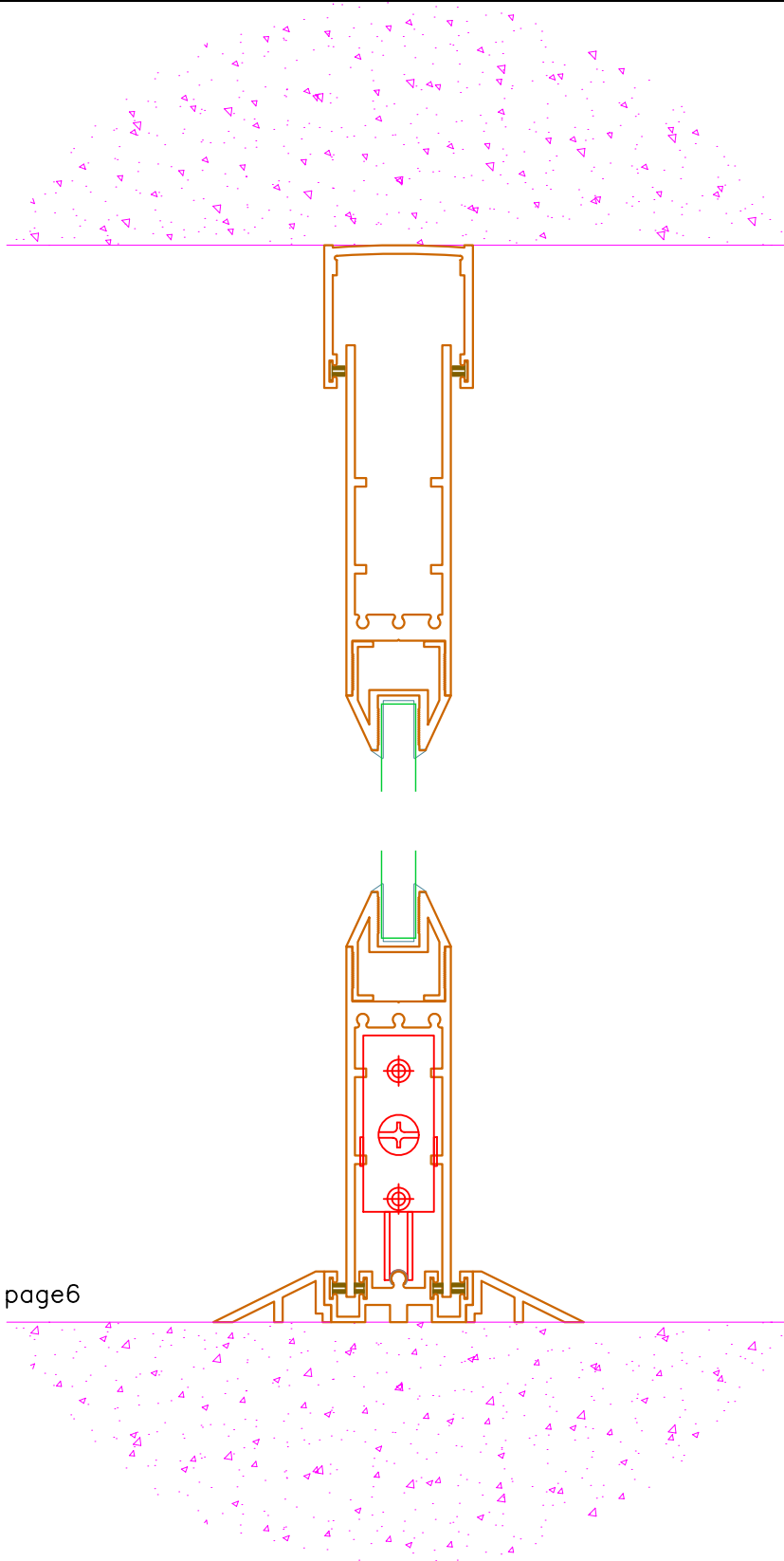
SCALE **XXXXX**

DATE **2/22/2011**

DRAWING NAME
MAX Slider details 1-2 glass.dwg

DRAFTPERSON **P**





PRL GLASS SYSTEMS INC.

Web Site: www.prlglass.com

www.prlaluminum.com

Telephone : (877) 775-25856
 Fax No. : (626) 968-95256

251 Mason Way
 City of industry, C.A.

TITLE **MAX Slider**

details

MAX Slider
 X

bottom rolling
 1/2" tempered glass
 1/2" tempered glass

02-22-11



SCALE **XXXXX**

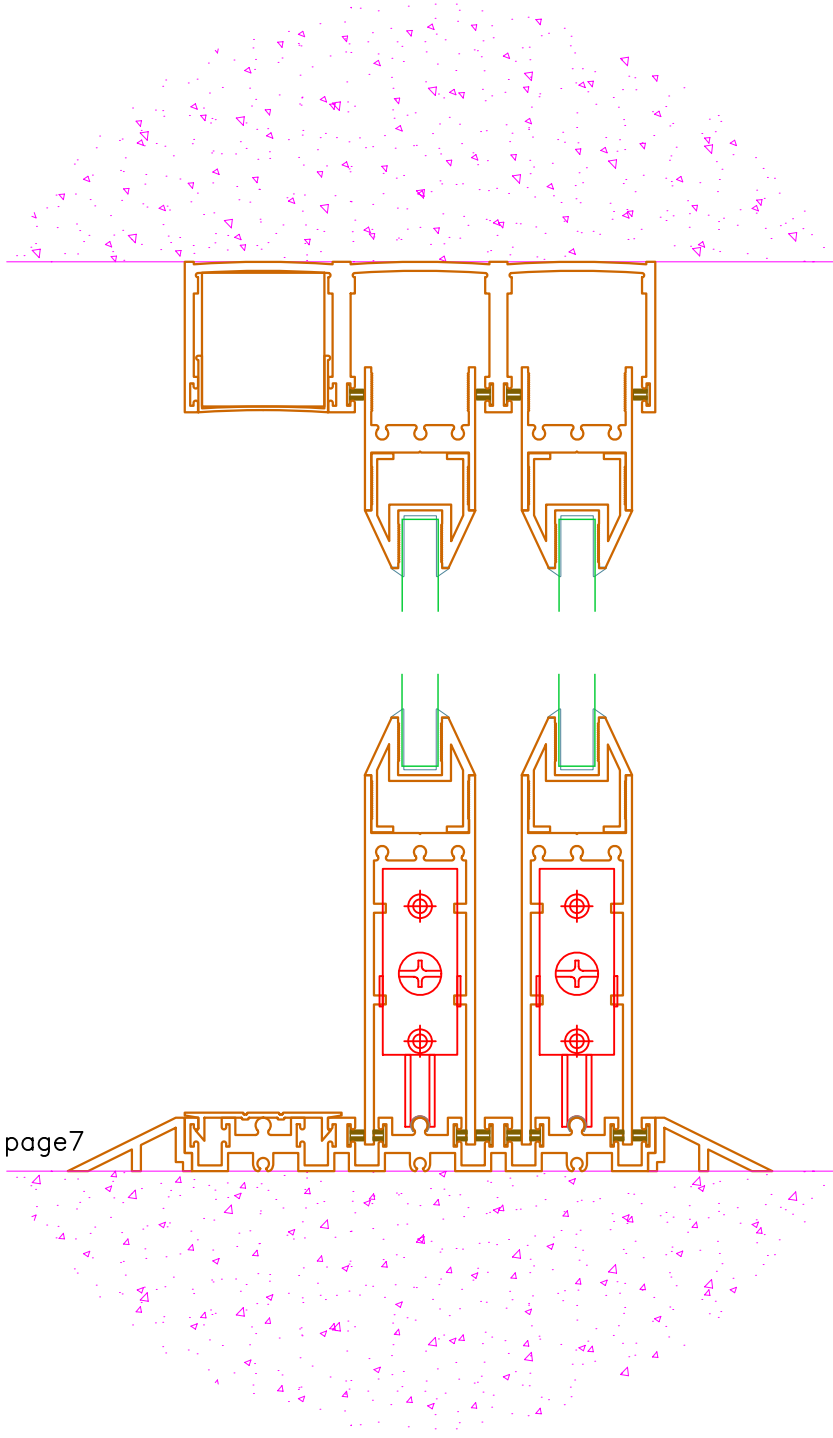
DATE **2/22/2011**

DRAWING NAME

MAX Slider details 1-2 glass.dwg

DRAFTPERSON **P**





PRL GLASS SYSTEMS INC.

Web Site: www.prlglass.com

www.prlaluminum.com

Telephone : (877) 775-25856
 Fax No. : (626) 968-95256

251 Mason Way
 City of industry, C.A.

TITLE **MAX Slider**

details

MAX Slider
 XXO
 bottom rolling
 vertical section
 1/2" tempered glass

02-22-11



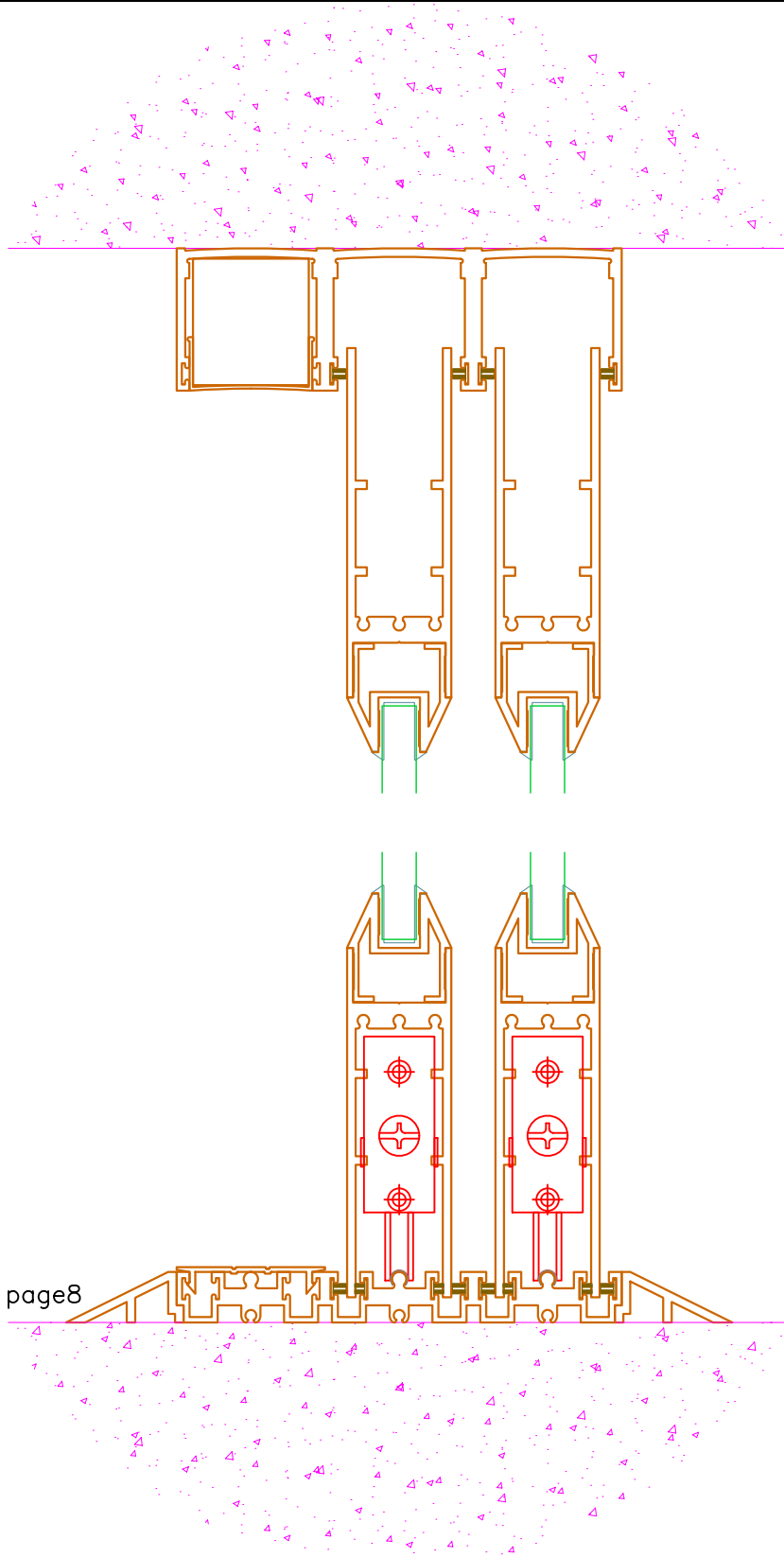
SCALE **XXXXX**

DATE **2/22/2011**

DRAWING NAME
MAX Slider details 1-2 glass.dwg

DRAFTPERSON **P**





PRL GLASS SYSTEMS INC.

Web Site: www.prlglass.com

www.prlaluminum.com

Telephone : (877) 775-25856
 Fax No. : (626) 968-95256

251 Mason Way
 City of industry, C.A.

TITLE **MAX Slider**
details

MAX Slider
 XXO
 bottom rolling
 vertical section
 1/2" tempered glass

02-22-11



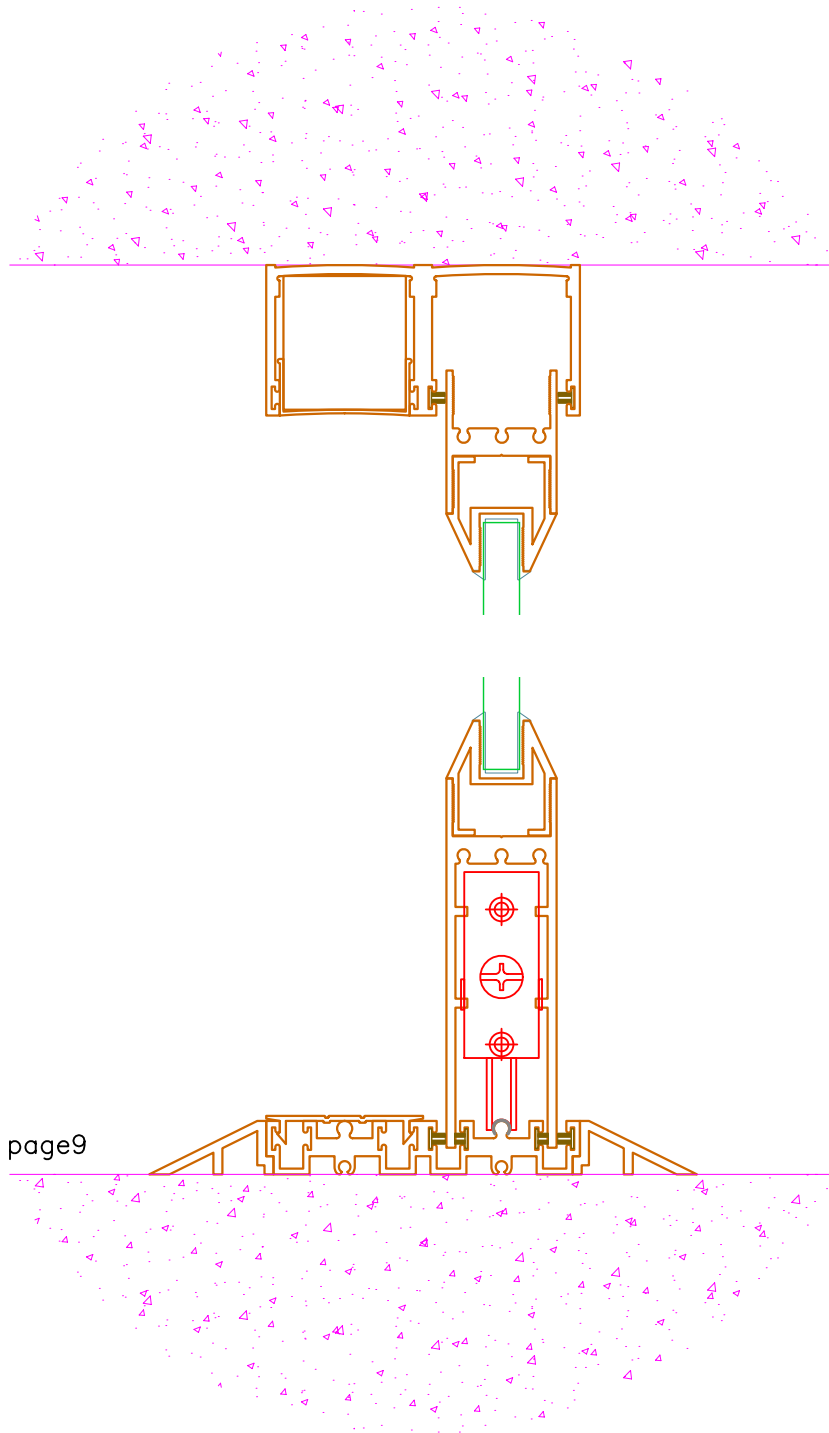
SCALE **XXXXX**

DATE **2/22/2011**

DRAWING NAME
MAX Slider details 1-2 glass.dwg

DRAFTERPERSON **P**





page9

PRL GLASS SYSTEMS INC.
 Web Site: www.prlglass.com www.prlaluminum.com

Telephone : (877) 775-25856 251 Mason Way
 Fax No. : (626) 968-95256 City of industry, C.A.

| | |
|-------------------------|-----------------------|
| TITLE MAX Slider | |
| details | |
| SCALE XXXXX | DATE 2/22/2011 |
| DRAFTPERSON P | |

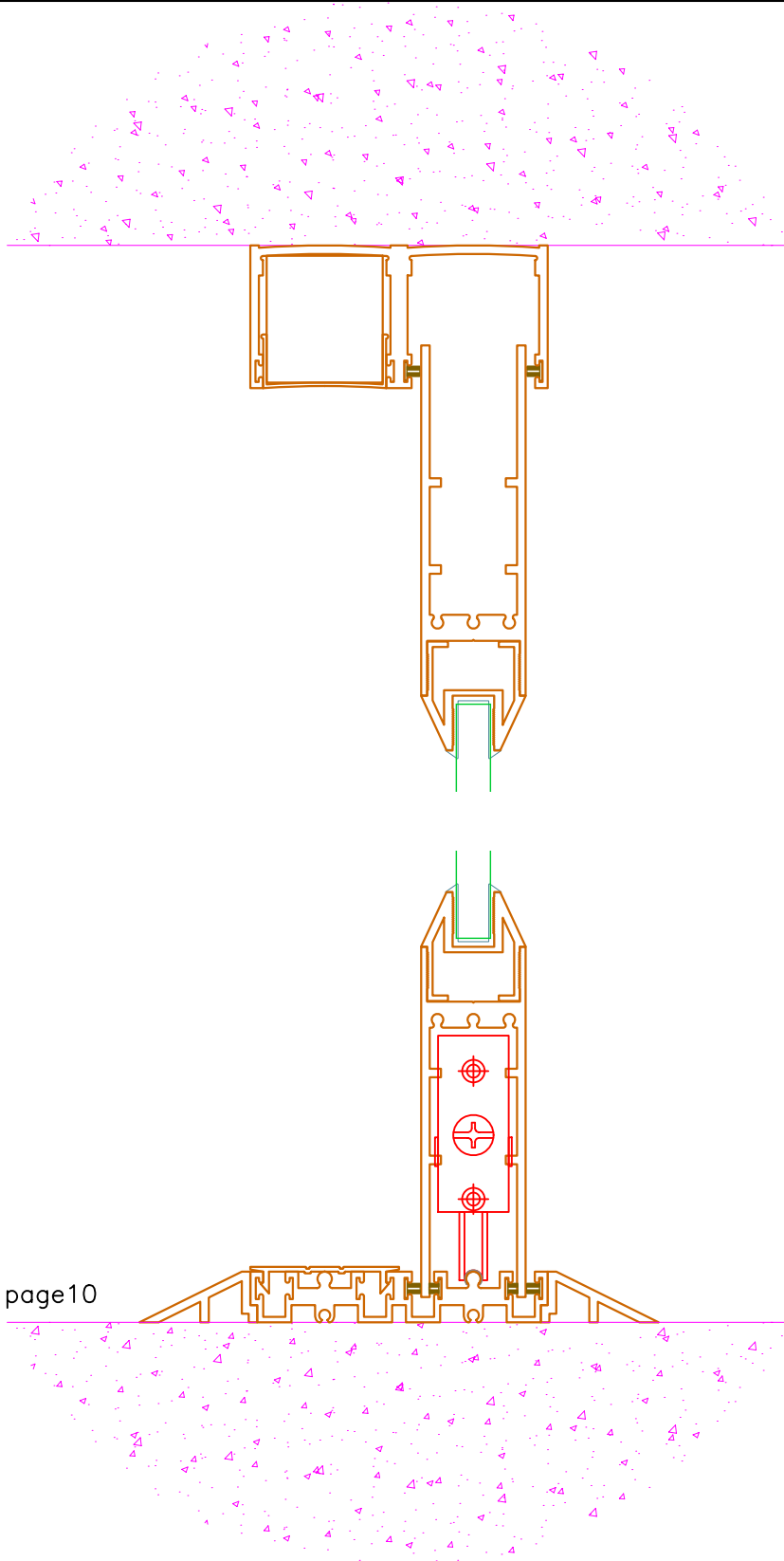
MAX Slider
 XO
 bottom rolling
 vertical section
 1/2" tempered glass

02-22-11



DRAWING NAME
MAX Slider details 1-2 glass.dwg





PRL GLASS SYSTEMS INC.

Web Site: www.prlglass.com

www.prlaluminum.com

Telephone : (877) 775-25856
 Fax No. : (626) 968-95256

251 Mason Way
 City of industry, C.A.

TITLE **MAX Slider**
details

MAX Slider
 XO
 bottom rolling
 vertical section
 1/2" tempered glass

02-22-11



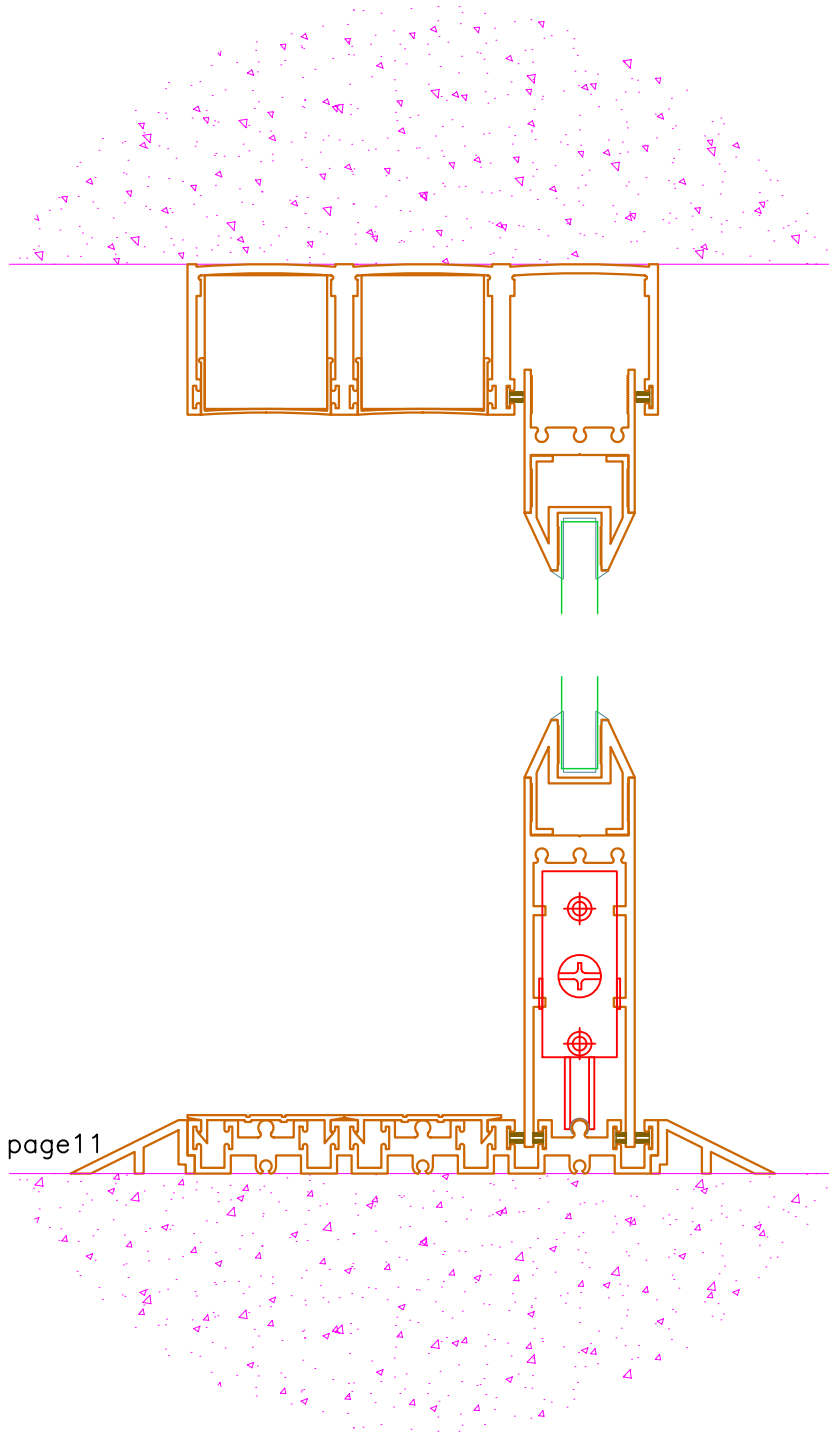
SCALE **XXXXX**

DATE **2/22/2011**

DRAWING NAME
MAX Slider details 1-2 glass.dwg

DRAFTPERSON **P**





PRL GLASS SYSTEMS INC.

Web Site: www.prlglass.com

www.prlaluminum.com

Telephone : (877) 775-25856
 Fax No. : (626) 968-95256

251 Mason Way
 City of industry, C.A.

TITLE **MAX Slider**

details

MAX Slider
 XXO

bottom rolling
 vertical section
 1/2" tempered glass

02-22-11



SCALE **XXXXX**

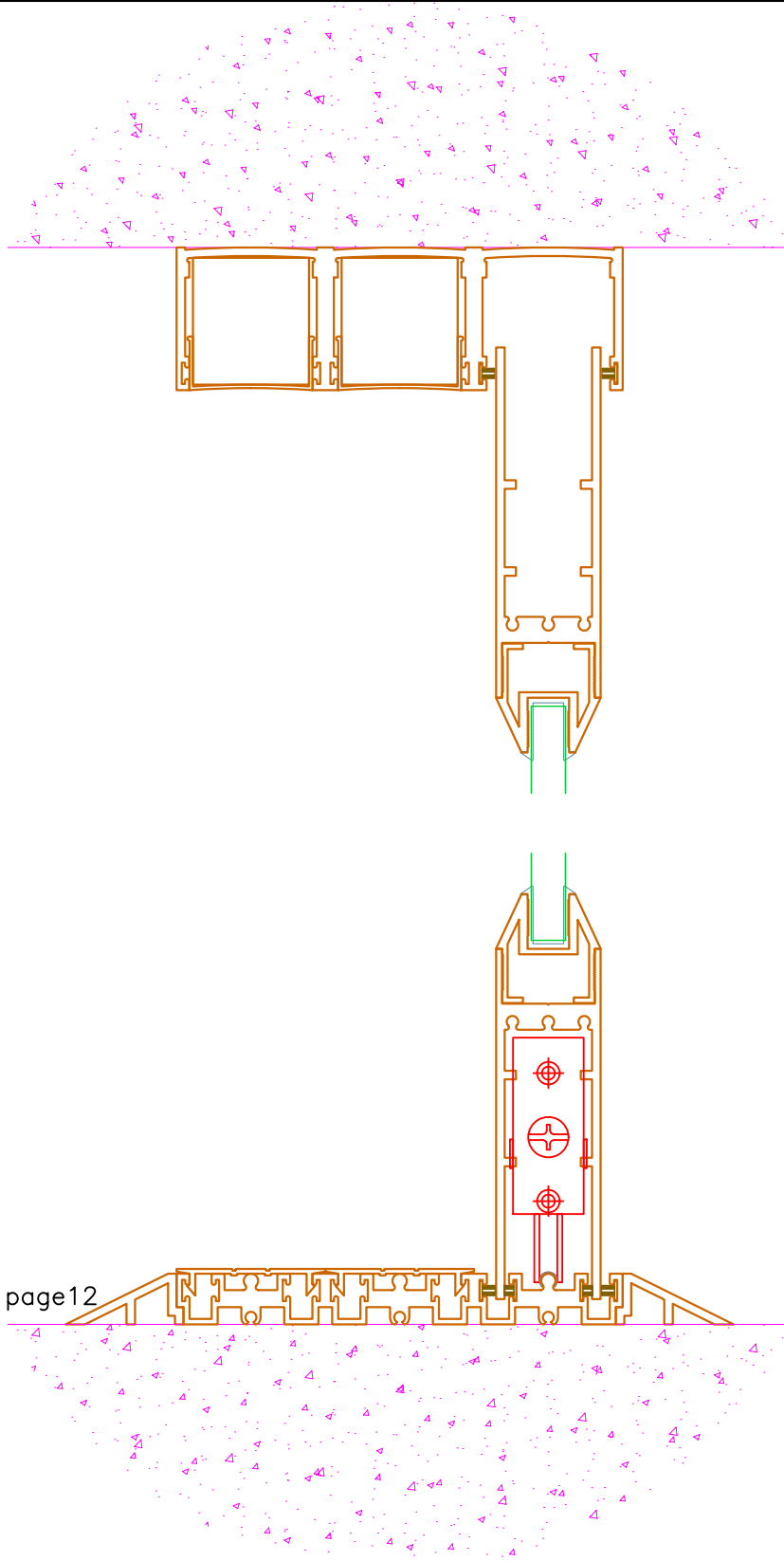
DATE **2/22/2011**

DRAWING NAME

MAX Slider details 1-2 glass.dwg

DRAFTPERSON **P**





PRL GLASS SYSTEMS INC.

Web Site: www.prlglass.com

www.prlaluminum.com

Telephone : (877) 775-25856
 Fax No. : (626) 968-95256

251 Mason Way
 City of industry, C.A.

TITLE **MAX Slider**

details

MAX Slider
 XXO
 bottom rolling
 vertical section
 1/2" tempered glass

02-22-11



SCALE **XXXXX**

DATE **2/22/2011**

DRAWING NAME
MAX Slider details 1-2 glass.dwg

DRAFTPERSON **P**

