

**PRL GLASS SYSTEMS INC.**

Web Site: [www.prlglass.com](http://www.prlglass.com)

[www.prlaluminum.com](http://www.prlaluminum.com)

Telephone : (877) 775-25856  
 Fax No. : (626) 968-95256

251 Mason Way  
 City of industry, C.A.

TITLE **MAX Slider**

**details**

MAX Slider  
 XXO  
 bottom rolling  
 elevation

ELEVATION 101



SCALE **XXXXX**

DATE **2/22/2011**

DRAWING NAME  
**MAX Slider details 3-8 glass.dwg**

DRAFTPERSON **P**

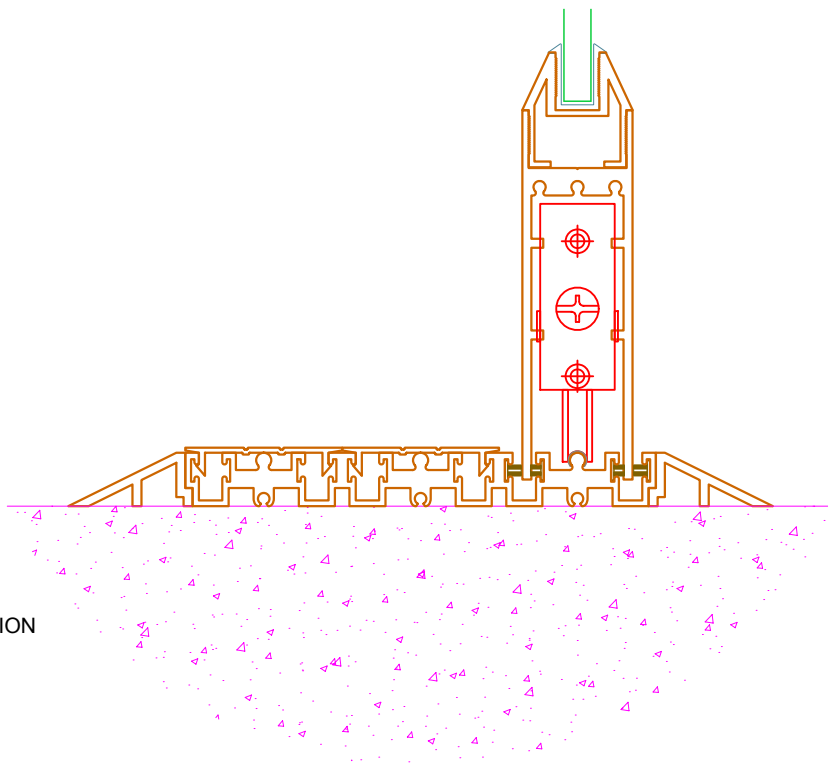
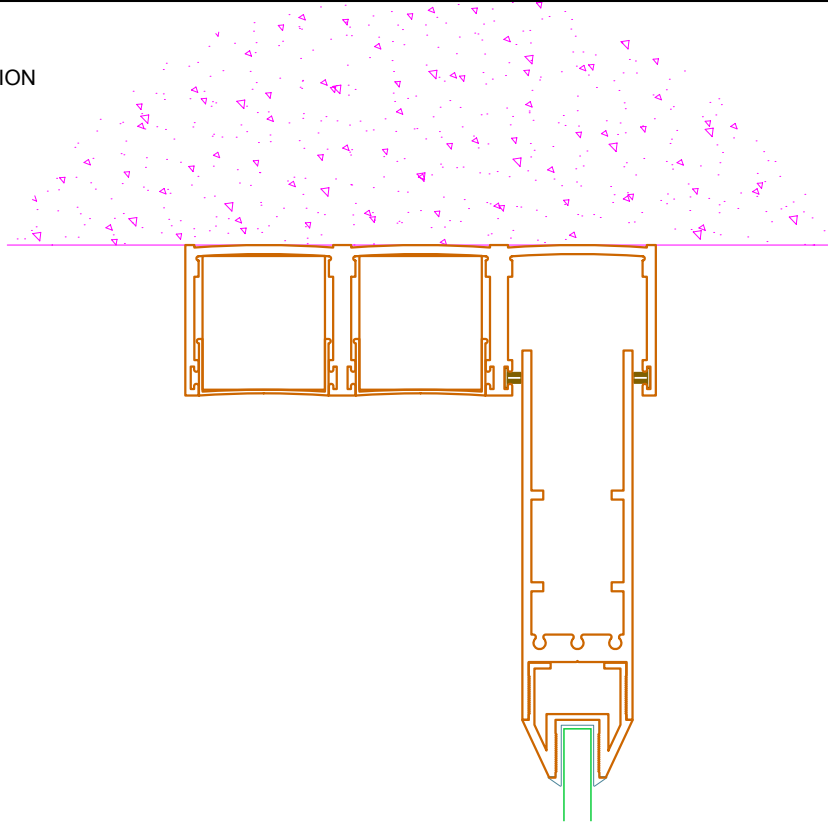


1  
101.A

VERTICAL CUT SECTION  
AT DOOR / HEAD



REFERENCE



2  
101.A

VERTICAL CUT SECTION  
AT DOOR / SILL



REFERENCE

# PRL GLASS SYSTEMS INC.

Web Site: [www.prlglass.com](http://www.prlglass.com)

[www.prlaluminum.com](http://www.prlaluminum.com)

Telephone : (877) 775-25856  
Fax No. : (626) 968-95256

251 Mason Way  
City of industry, C.A.

TITLE **MAX Slider**  
**details**

MAX Slider  
XXO  
bottom rolling  
vertical section  
3/8" tempered glass

101.A



SCALE **XXXXX**

DATE **2/22/2011**

DRAWING NAME  
**MAX Slider details 3-8 glass.dwg**

DRAFTPERSON **P**

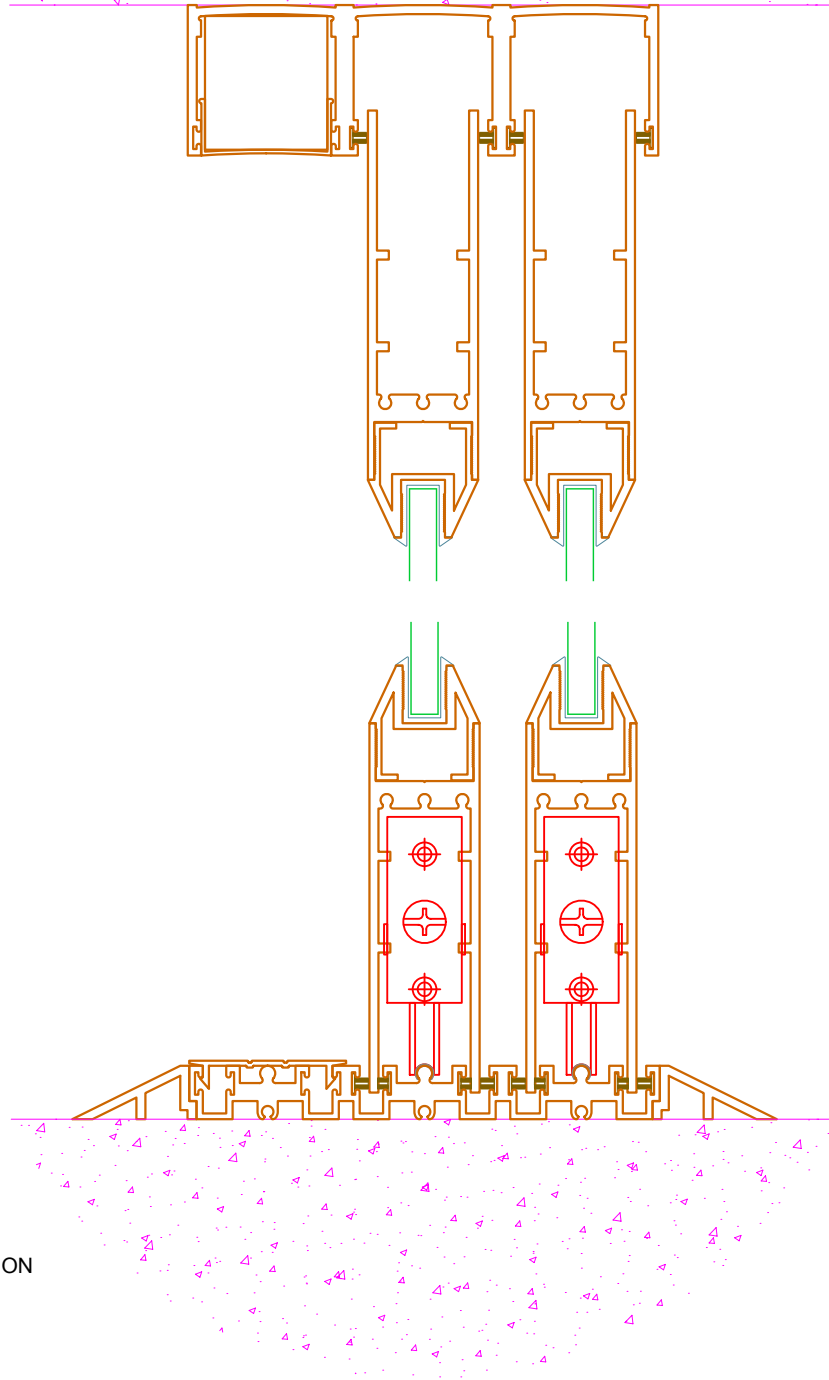


1  
101.B

VERTICAL CUT SECTION  
AT DOOR / HEAD



REFERENCE



2  
101.B

VERTICAL CUT SECTION  
AT DOOR / SILL



REFERENCE

# PRL GLASS SYSTEMS INC.

Web Site: [www.prlglass.com](http://www.prlglass.com)

[www.prlaluminum.com](http://www.prlaluminum.com)

Telephone : (877) 775-25856  
Fax No. : (626) 968-95256

251 Mason Way  
City of industry, C.A.

TITLE **MAX Slider**  
**details**

MAX Slider  
XXO  
bottom rolling  
vertical section  
3/8" tempered glass

101.B



SCALE **XXXXX**

DATE **2/22/2011**

DRAWING NAME  
**MAX Slider details 3-8 glass.dwg**

DRAFTPERSON **P**

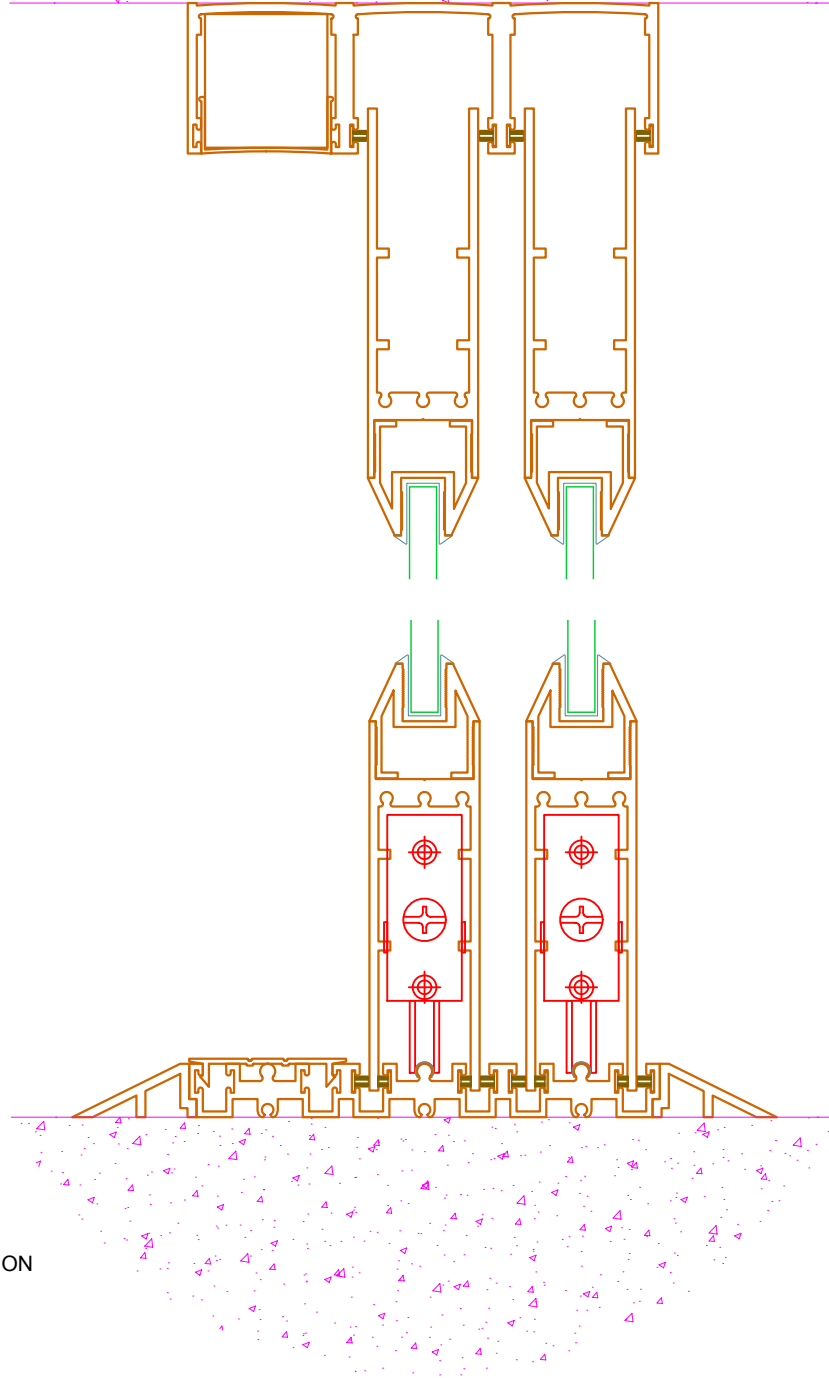


1  
101.C

VERTICAL CUT SECTION  
AT SIDELITE / HEAD



REFERENCE



2  
101.C

VERTICAL CUT SECTION  
AT SIDELITE / SILL



REFERENCE

# PRL GLASS SYSTEMS INC.

Web Site: [www.prlglass.com](http://www.prlglass.com)

[www.prlaluminum.com](http://www.prlaluminum.com)

Telephone : (877) 775-25856  
Fax No. : (626) 968-95256

251 Mason Way  
City of industry, C.A.

TITLE **MAX Slider**  
**details**

MAX Slider  
XXO  
bottom rolling  
vertical section  
3/8" tempered glass

101.C



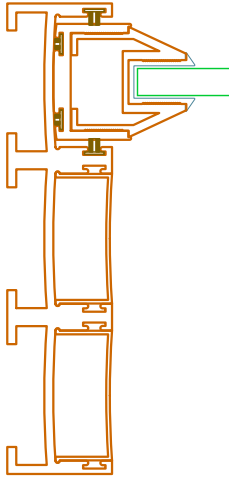
SCALE **XXXXX**

DATE **2/22/2011**

DRAWING NAME  
**MAX Slider details 3-8 glass.dwg**

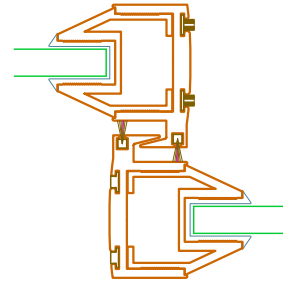
DRAFTERPERSON **P**





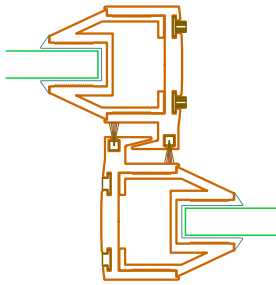
1  
101.D HORIZONTAL CUT SECTION  
AT DOOR STRIKE

REFERENCE



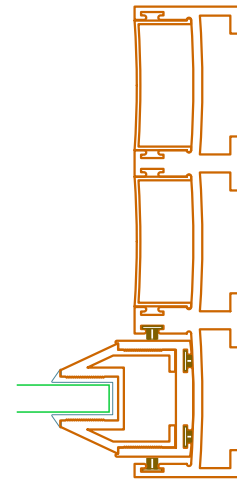
2  
101.D HORIZONTAL CUT SECTION  
AT DOOR INTERLOCK STYLE

REFERENCE



3  
101.D HORIZONTAL CUT SECTION  
AT DOOR INTERLOCK STYLE

REFERENCE



4  
101.D HORIZONTAL CUT SECTION  
AT SIDELITE / JAMB

REFERENCE

# PRL GLASS SYSTEMS INC.

Web Site: [www.prlglass.com](http://www.prlglass.com)

[www.prlaluminum.com](http://www.prlaluminum.com)

Telephone : (877) 775-25856  
Fax No. : (626) 968-95256

251 Mason Way  
City of industry, C.A.

TITLE **MAX Slider**  
**details**

MAX Slider  
XXO  
bottom rolling  
vertical section  
3/8" tempered glass

101.D

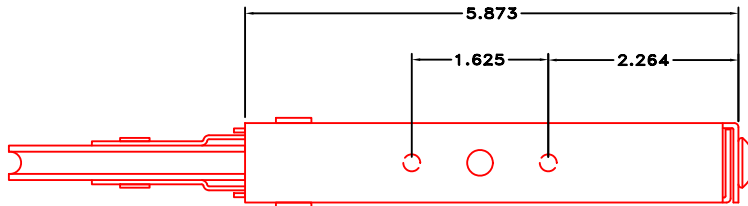


SCALE **XXXXX** DATE **2/22/2011**

DRAFTPERSON **P**

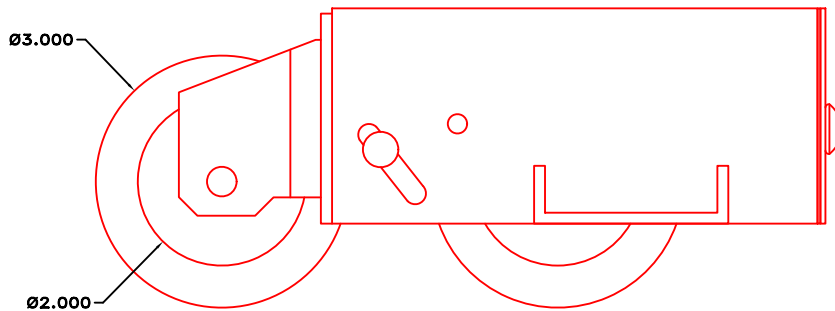


DRAWING NAME  
**MAX Slider details 3-8 glass.dwg**

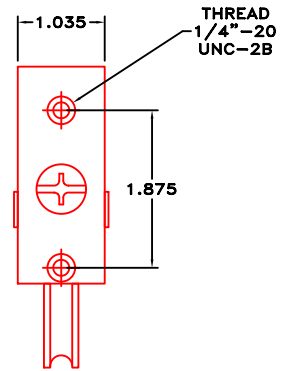


top view

NOTE: Only use this roller  
with glazed MAX Slider



front view



side view

**PRL GLASS SYSTEMS INC.**

Web Site: [www.prlglass.com](http://www.prlglass.com)

[www.prlaluminum.com](http://www.prlaluminum.com)

Telephone : (877) 775-25856  
Fax No. : (626) 968-95256

251 Mason Way  
City of industry, C.A.

TITLE **MAX Slider**

**details**

SCALE **XXXXX**

DATE **2/22/2011**

DRAFTPERSON **P**



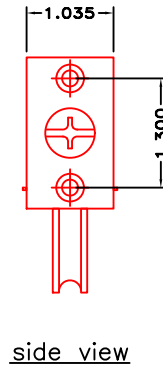
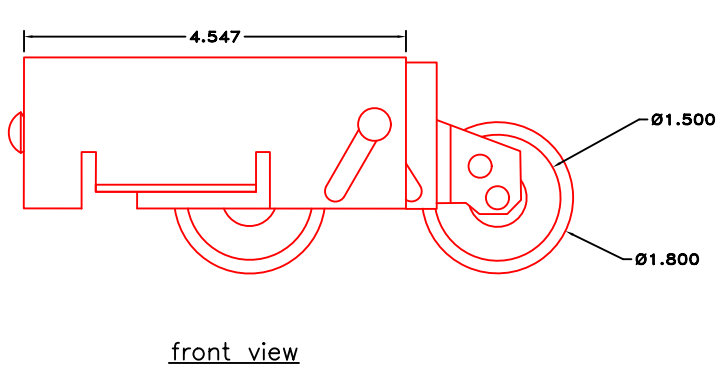
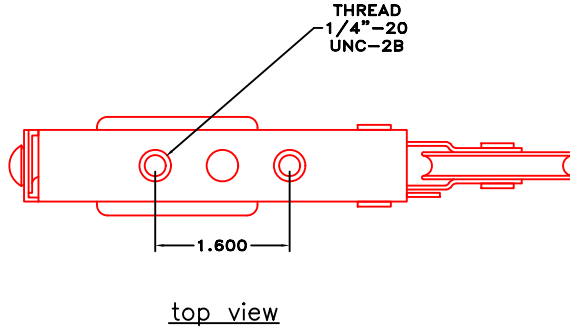
MAX Slider  
mammoth  
tandem bottom roller

mammoth tandem roller

DRAWING NAME  
**MAX Slider details 3-8 glass.dwg**



NOTE:  
 this roller can only be used  
 with MAX Slider screen door, not glazed door



**PRL GLASS SYSTEMS INC.**

Web Site: [www.prlglass.com](http://www.prlglass.com)

[www.prlaluminum.com](http://www.prlaluminum.com)

Telephone : (877) 775-25856  
 Fax No. : (626) 968-95256

251 Mason Way  
 City of industry, C.A.

TITLE **MAX Slider**

**details**

MAX Slider  
 optional  
 tandem bottom roller

standard tandem roller



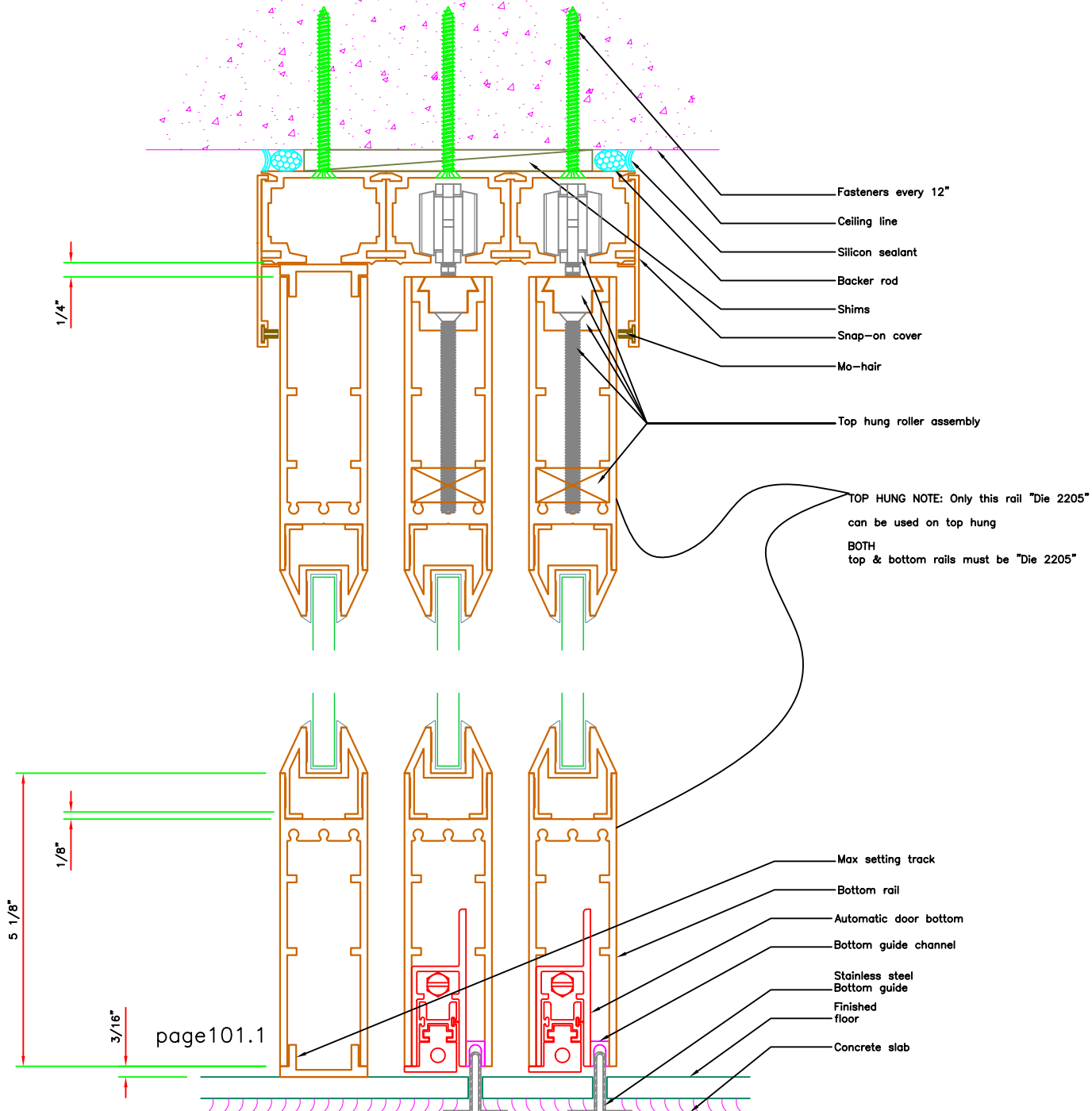
SCALE **XXXXX**

DATE **2/22/2011**

DRAWING NAME  
**MAX Slider details 3-8 glass.dwg**

DRAFTPERSON **P**





# PRL GLASS SYSTEMS INC.

Web Site: [www.prlglass.com](http://www.prlglass.com)

[www.prlaluminum.com](http://www.prlaluminum.com)

Telephone : (877) 775-25856  
 Fax No. : (626) 968-95256

251 Mason Way  
 City of industry, C.A.

TITLE **MAX Slider**  
**details**

MAX Slider  
 XXO  
 top hung  
 vertical section  
 3/8" tempered glass

101.1



SCALE **XXXXX**

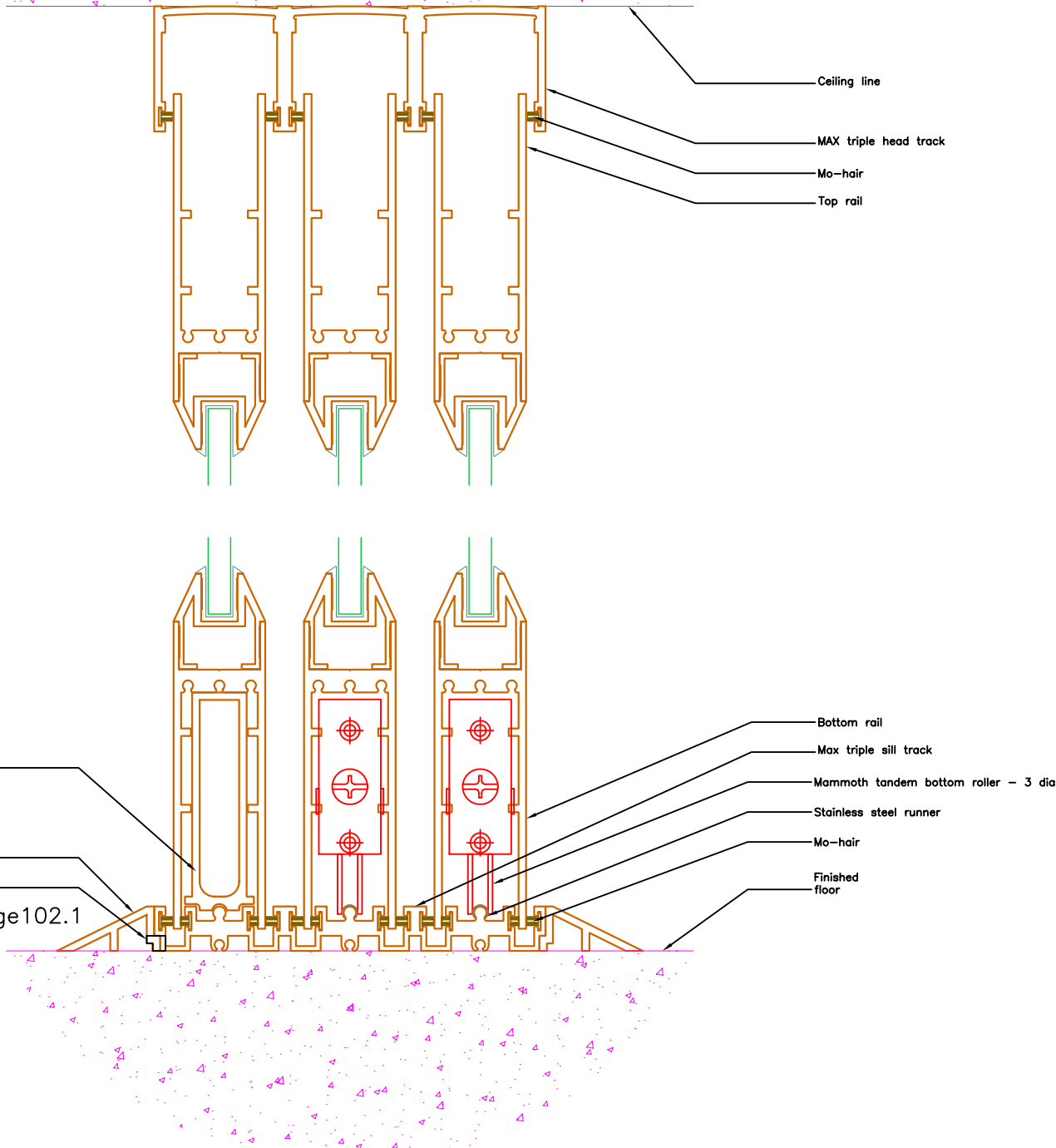
DATE **2/22/2011**

DRAWING NAME  
**MAX Slider details 3-8 glass.dwg**

DRAFTPERSON **P**







# PRL GLASS SYSTEMS INC.

Web Site: [www.prlglass.com](http://www.prlglass.com)

[www.prlaluminum.com](http://www.prlaluminum.com)

Telephone : (877) 775-25856  
 Fax No. : (626) 968-95256

251 Mason Way  
 City of industry, C.A.

**TITLE** MAX Slider  
 details

MAX Slider  
 XXO  
 bottom rolling  
 vertical section  
 3/8" tempered glass

102.1



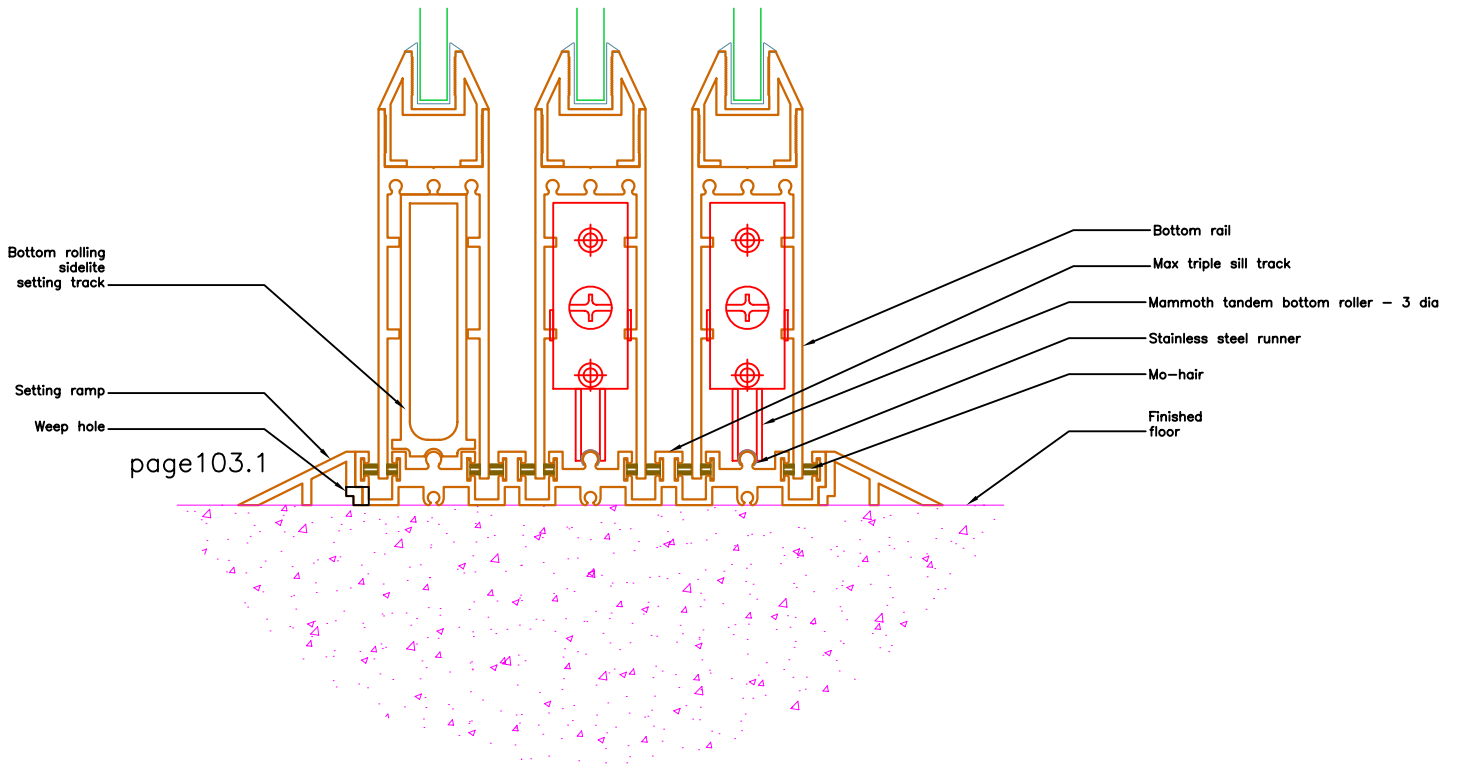
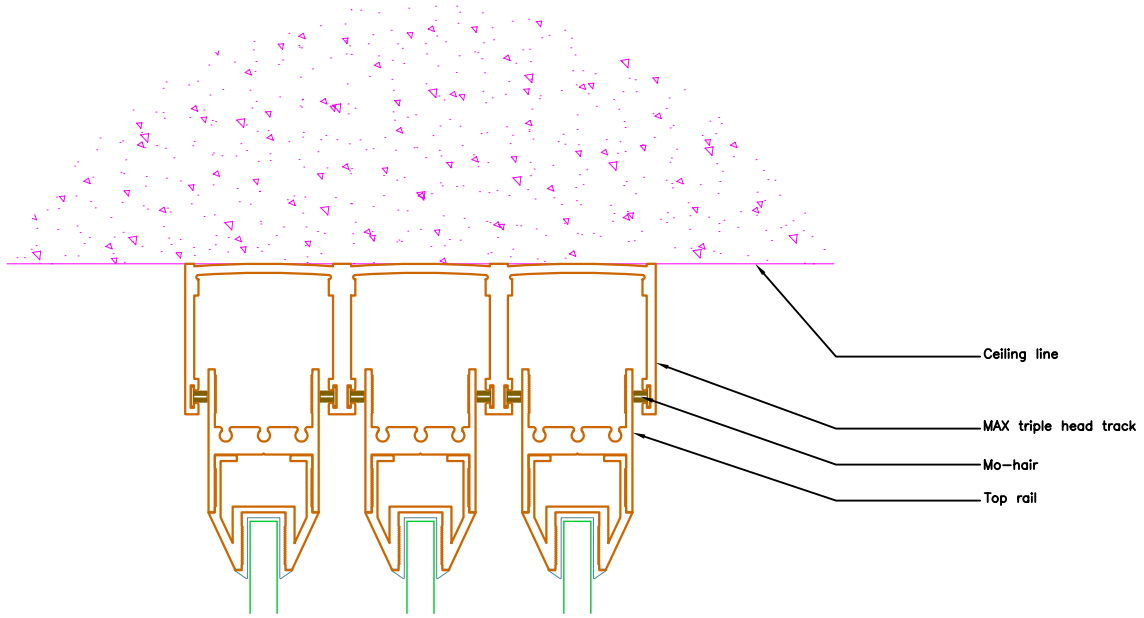
**SCALE** XXXXX

**DATE** 2/22/2011

**DRAWING NAME**  
 MAX Slider details 3-8 glass.dwg

**DRAFTPERSON** P





**PRL GLASS SYSTEMS INC.**

Web Site: [www.prlglass.com](http://www.prlglass.com)

[www.prlaluminum.com](http://www.prlaluminum.com)

Telephone : (877) 775-25856  
 Fax No. : (626) 968-95256

251 Mason Way  
 City of industry, C.A.

TITLE **MAX Slider**

**details**

MAX Slider  
 XXO  
 bottom rolling  
 vertical section  
 3/8" tempered glass

103.1



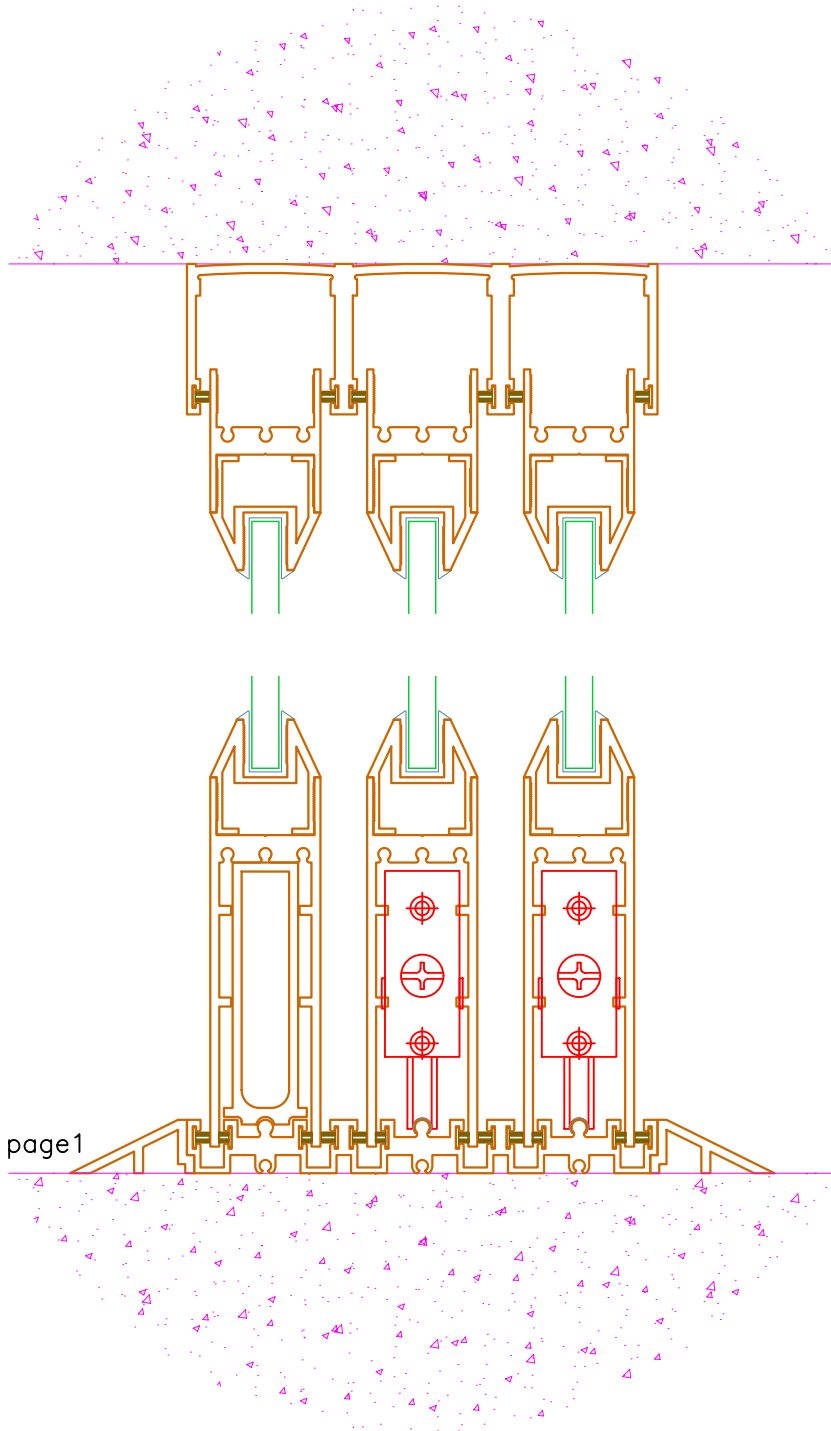
SCALE **XXXXX**

DATE **2/22/2011**

DRAWING NAME  
**MAX Slider details 3-8 glass.dwg**

DRAFTERPERSON **P**





**PRL GLASS SYSTEMS INC.**

Web Site: [www.prlglass.com](http://www.prlglass.com)

[www.prlaluminum.com](http://www.prlaluminum.com)

Telephone : (877) 775-25856  
 Fax No. : (626) 968-95256

251 Mason Way  
 City of industry, C.A.

TITLE **MAX Slider**

**details**

MAX Slider  
 XXO

bottom rolling  
 vertical section  
 3/8" tempered glass

02-22-11



SCALE **XXXXX**

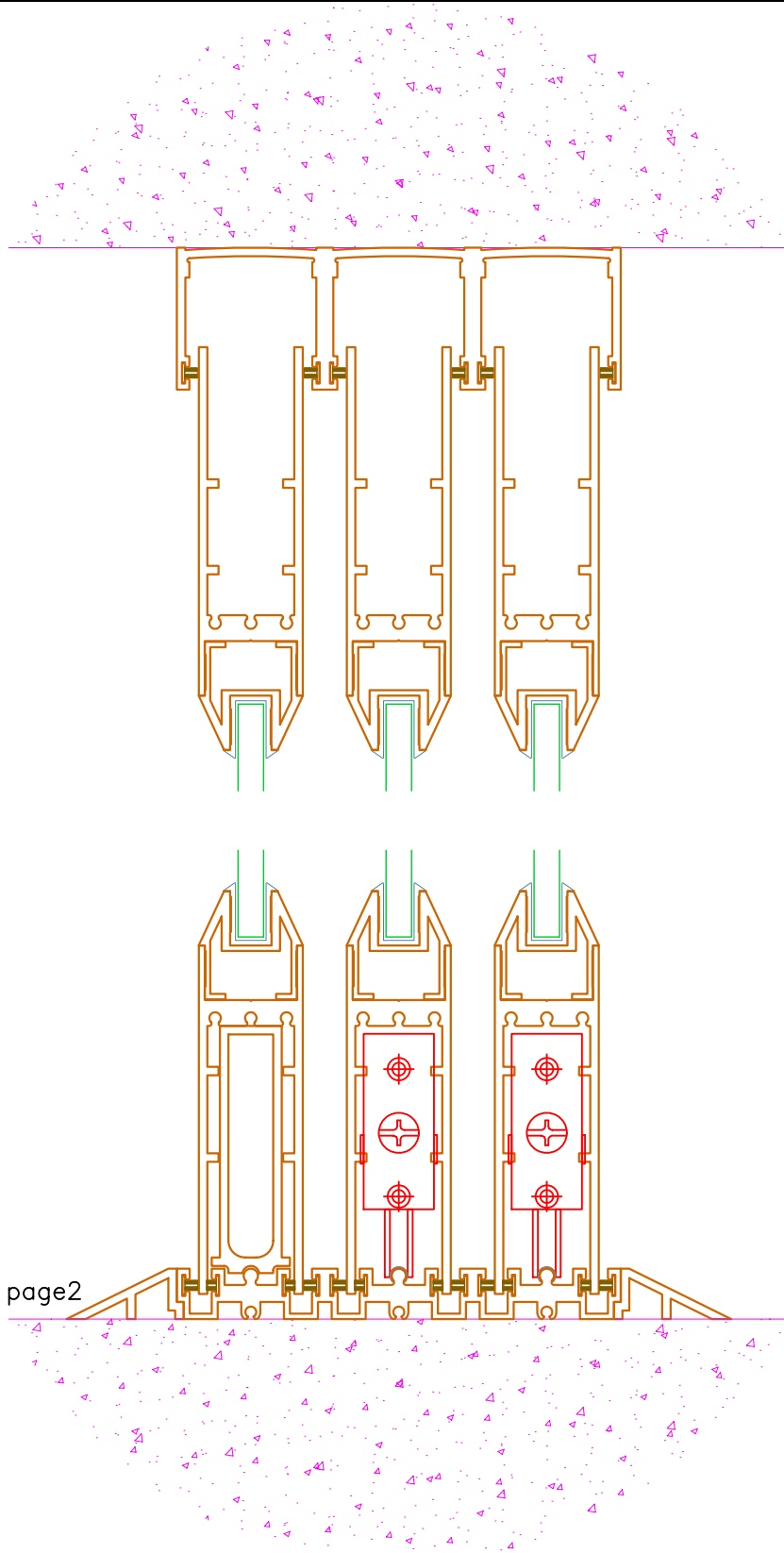
DATE **2/22/2011**

DRAWING NAME

**MAX Slider details 3-8 glass.dwg**

DRAFTERPERSON **P**





**PRL GLASS SYSTEMS INC.**

Web Site: [www.prlglass.com](http://www.prlglass.com)

[www.prlaluminum.com](http://www.prlaluminum.com)

Telephone : (877) 775-25856  
 Fax No. : (626) 968-95256

251 Mason Way  
 City of industry, C.A.

TITLE **MAX Slider**  
**details**

MAX Slider  
 XXO  
 bottom rolling  
 vertical section  
 3/8" tempered glass

02-22-11



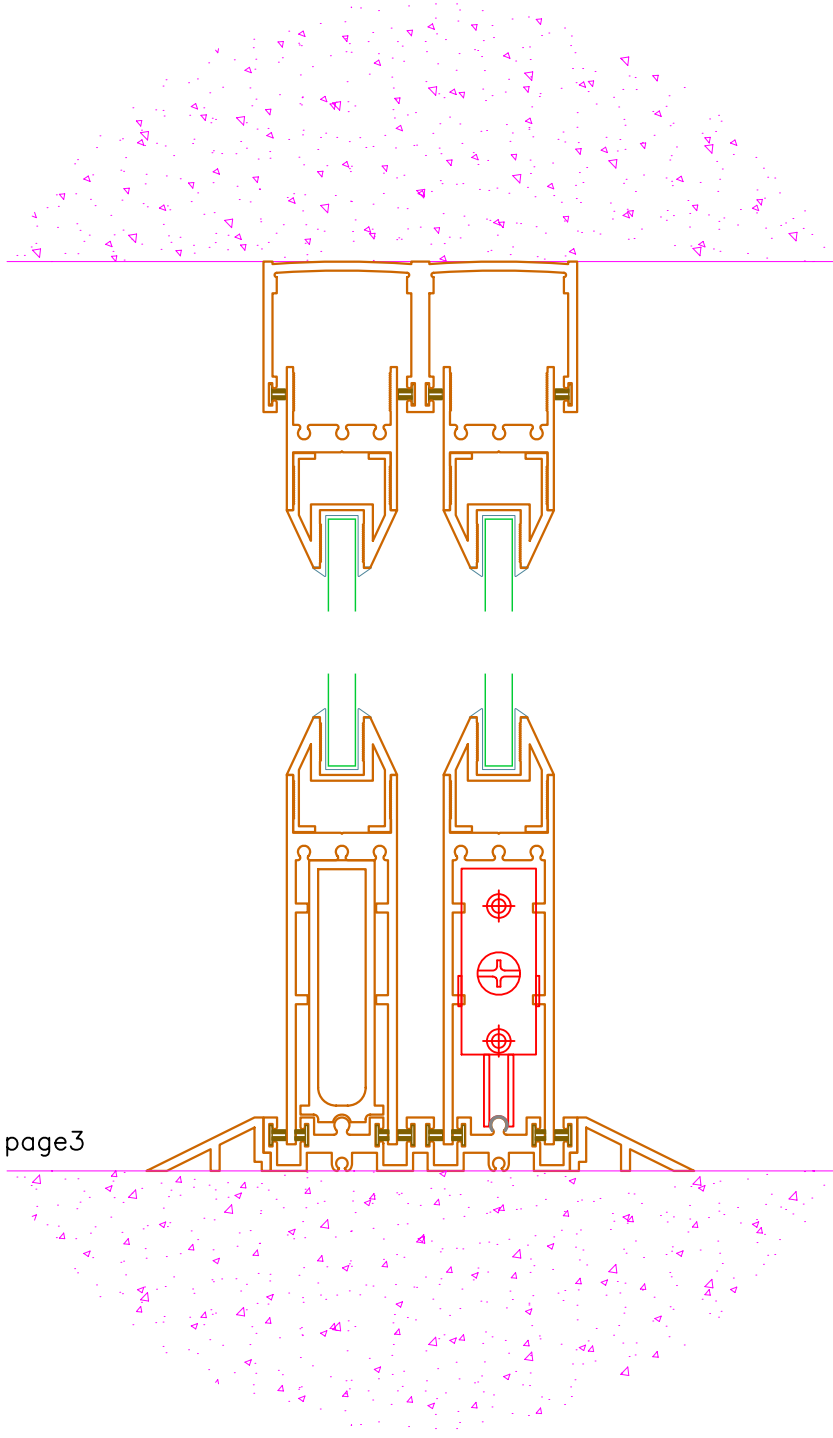
SCALE **XXXXX**

DATE **2/22/2011**

DRAFTPERSON **P**



DRAWING NAME  
**MAX Slider details 3-8 glass.dwg**



**PRL GLASS SYSTEMS INC.**

Web Site: [www.prlglass.com](http://www.prlglass.com)

[www.prlaluminum.com](http://www.prlaluminum.com)

Telephone : (877) 775-25856  
 Fax No. : (626) 968-95256

251 Mason Way  
 City of industry, C.A.

TITLE **MAX Slider**

**details**

MAX Slider  
 XO  
 bottom rolling  
 vertical section  
 3/8" tempered glass

02-22-11



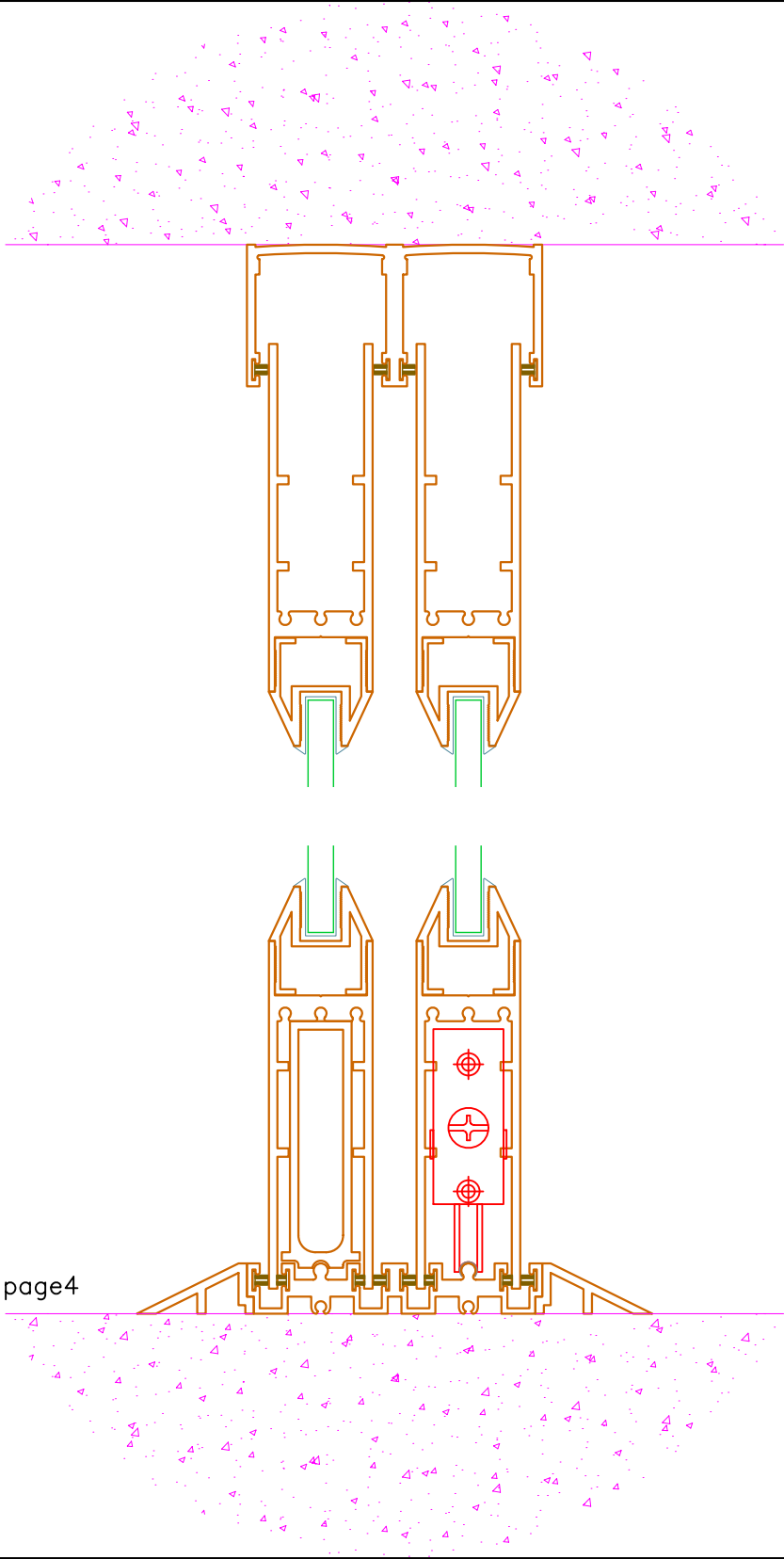
SCALE **XXXXX**

DATE **2/22/2011**

DRAWING NAME  
**MAX Slider details 3-8 glass.dwg**

DRAFTPERSON **P**





page4

**PRL GLASS SYSTEMS INC.**

Web Site: [www.prlglass.com](http://www.prlglass.com)

[www.prlaluminum.com](http://www.prlaluminum.com)

Telephone : (877) 775-25856  
Fax No. : (626) 968-95256

251 Mason Way  
City of industry, C.A.

TITLE **MAX Slider**  
**details**

MAX Slider  
XO  
bottom rolling  
vertical section  
3/8" tempered glass

02-22-11



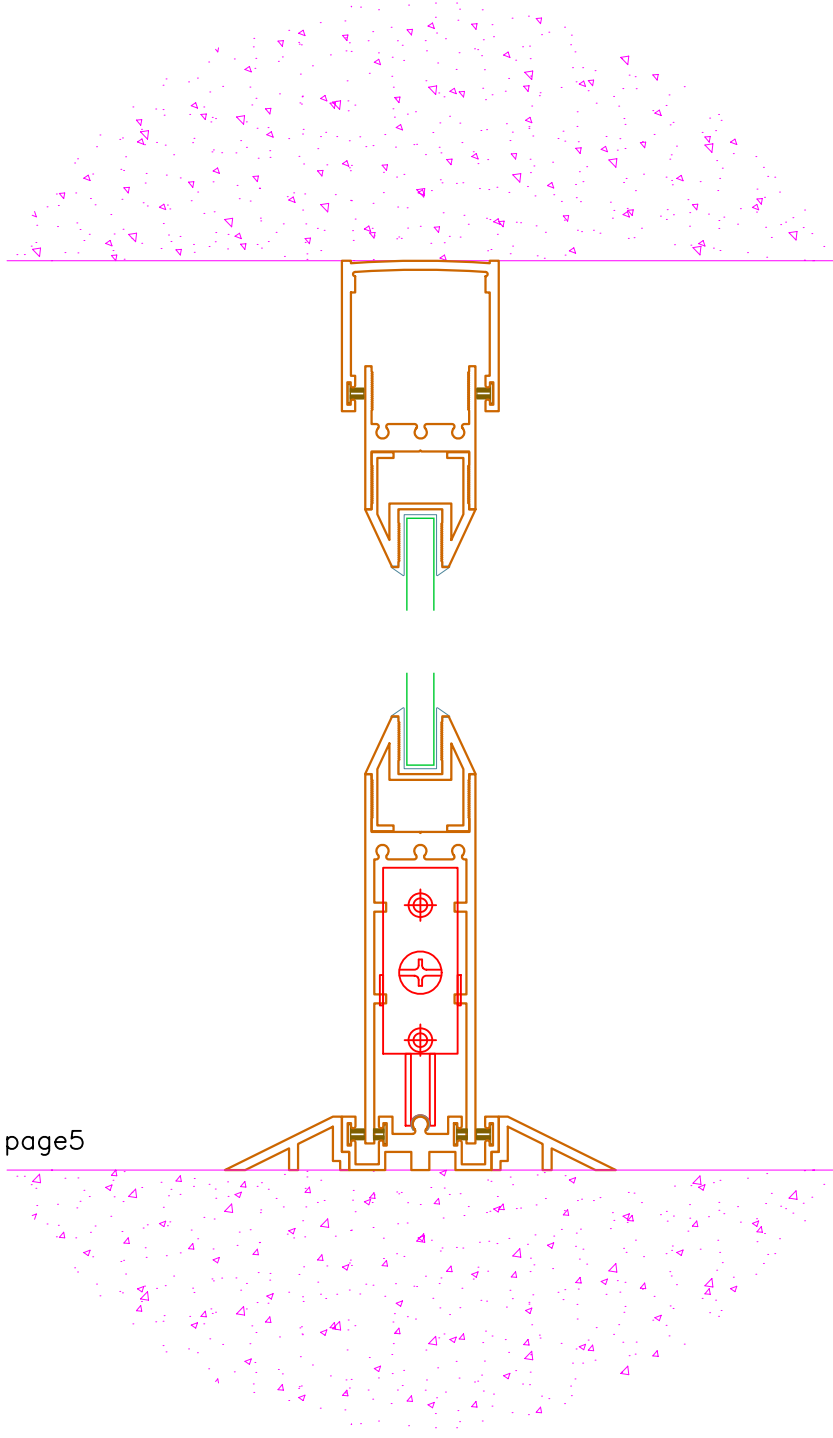
SCALE **XXXXX**

DATE **2/22/2011**

DRAWING NAME  
**MAX Slider details 3-8 glass.dwg**

DRAFTPERSON **P**





page5

**PRL GLASS SYSTEMS INC.**

Web Site: [www.prlglass.com](http://www.prlglass.com)

[www.prlaluminum.com](http://www.prlaluminum.com)

Telephone : (877) 775-25856  
Fax No. : (626) 968-95256

251 Mason Way  
City of industry, C.A.

TITLE **MAX Slider**

**details**

MAX Slider  
X

bottom rolling  
vertical section  
3/8" tempered glass

02-22-11



SCALE **XXXXX**

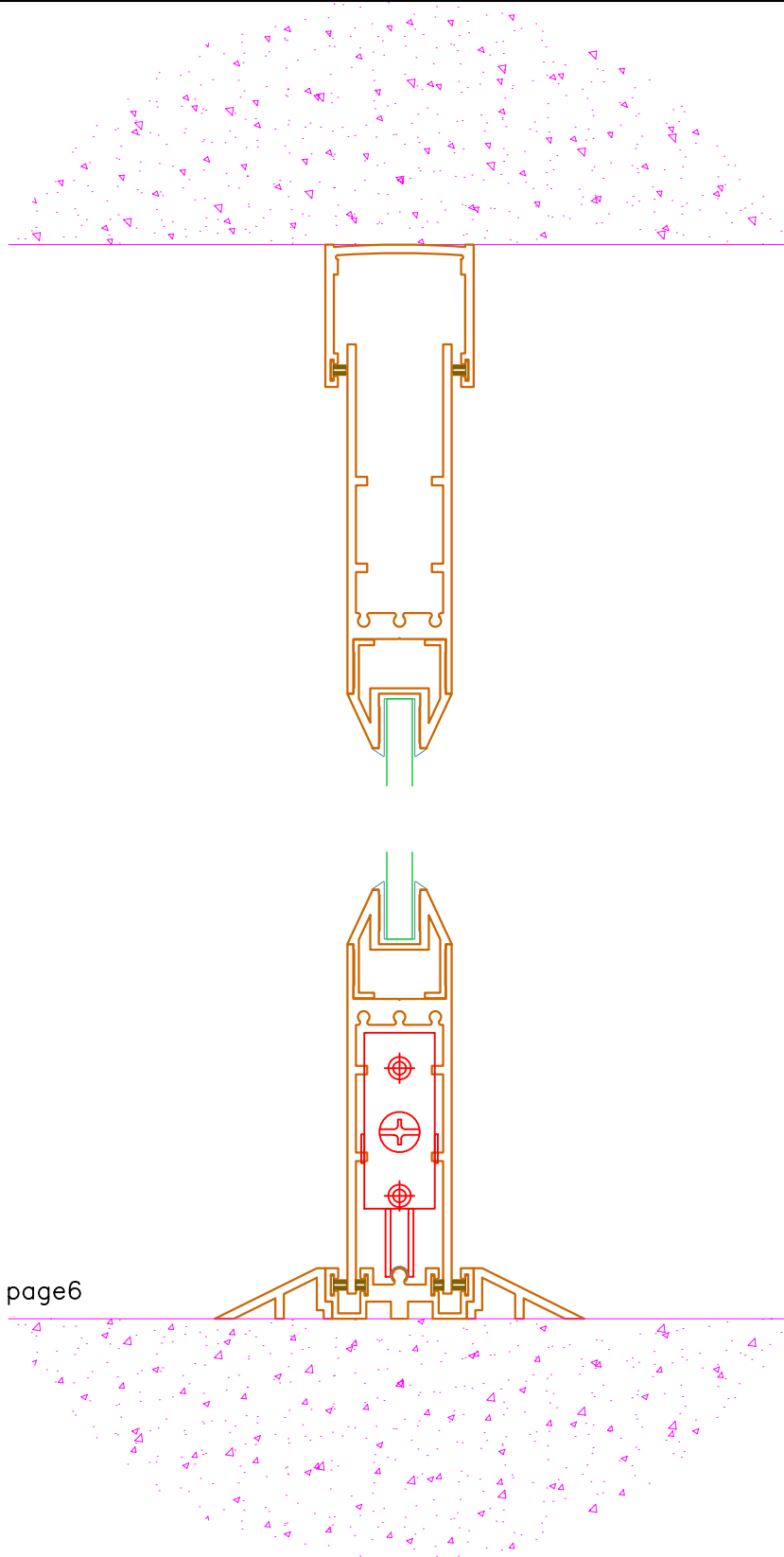
DATE **2/22/2011**

DRAFTPERSON **P**



DRAWING NAME

**MAX Slider details 3-8 glass.dwg**



page6

# PRL GLASS SYSTEMS INC.

Web Site: [www.prlglass.com](http://www.prlglass.com)

[www.prlaluminum.com](http://www.prlaluminum.com)

Telephone : (877) 775-25856  
Fax No. : (626) 968-95256

251 Mason Way  
City of industry, C.A.

TITLE **MAX Slider**

**details**

MAX Slider  
X

bottom rolling  
vertical section  
3/8" tempered glass

02-22-11



SCALE **XXXXX**

DATE **2/22/2011**

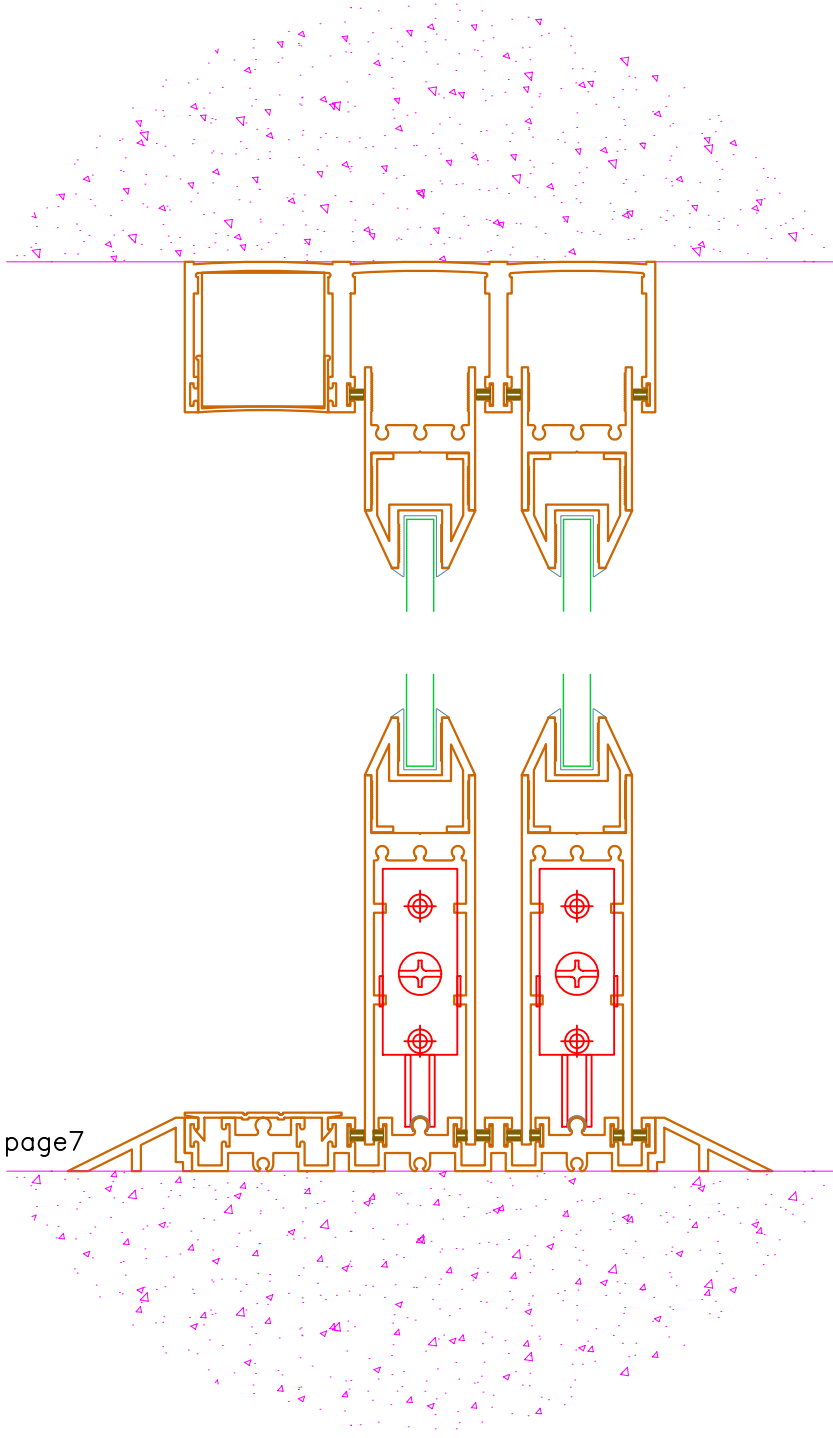
DRAWING NAME

**MAX Slider details 3-8 glass.dwg**

DRAFTPERSON **P**







**PRL GLASS SYSTEMS INC.**

Web Site: [www.prlglass.com](http://www.prlglass.com)

[www.prlaluminum.com](http://www.prlaluminum.com)

Telephone : (877) 775-25856  
 Fax No. : (626) 968-95256

251 Mason Way  
 City of industry, C.A.

TITLE **MAX Slider**

**details**

MAX Slider  
 XXO  
 bottom rolling  
 vertical section  
 3/8" tempered glass

02-22-11



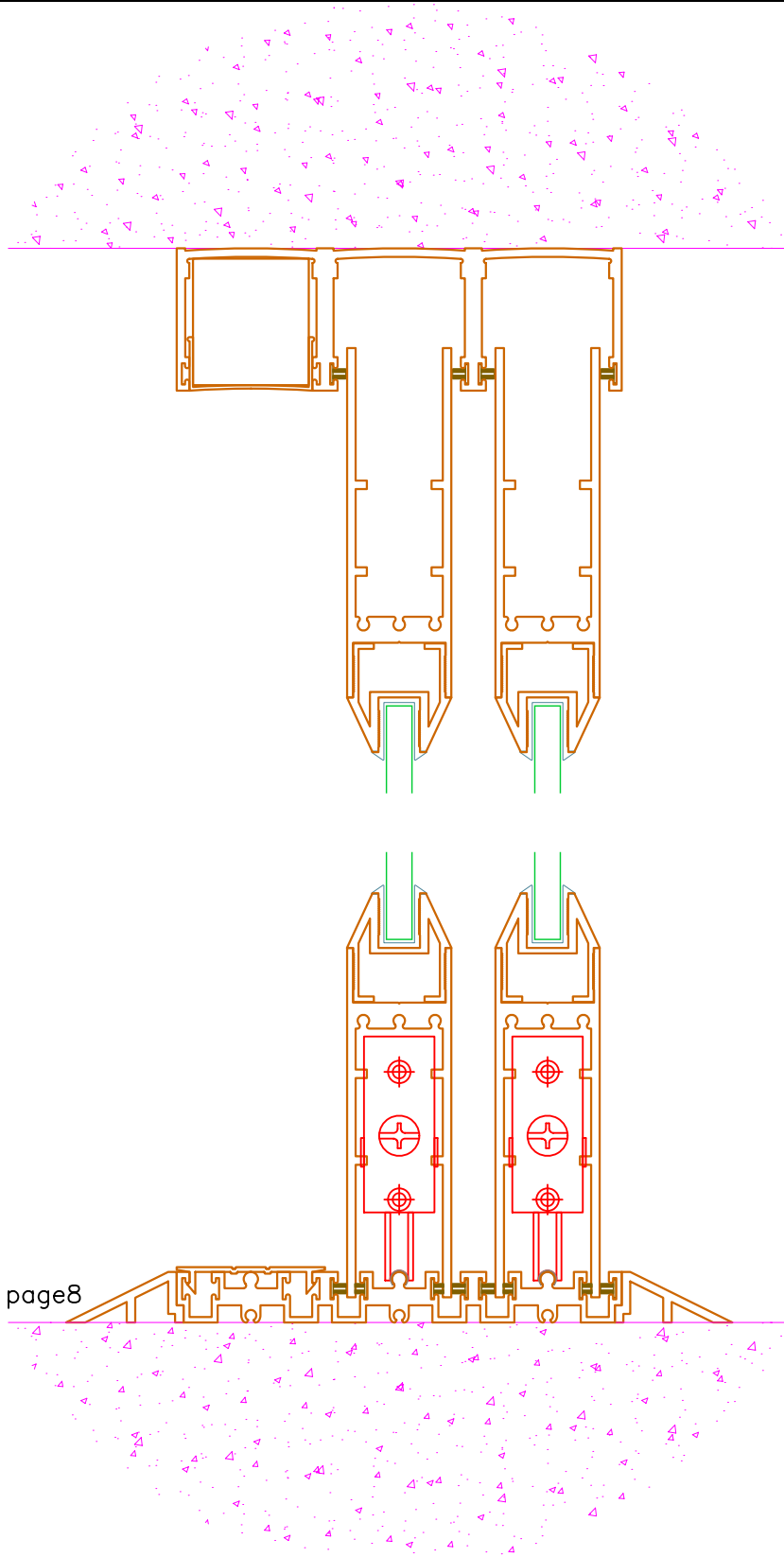
SCALE **XXXXX**

DATE **2/22/2011**

DRAFTPERSON **P**



DRAWING NAME  
**MAX Slider details 3-8 glass.dwg**



**PRL GLASS SYSTEMS INC.**

Web Site: [www.prlglass.com](http://www.prlglass.com)

[www.prlaluminum.com](http://www.prlaluminum.com)

Telephone : (877) 775-25856  
 Fax No. : (626) 968-95256

251 Mason Way  
 City of industry, C.A.

TITLE **MAX Slider**  
**details**

MAX Slider  
 XXO  
 bottom rolling  
 vertical section  
 3/8" tempered glass

02-22-11



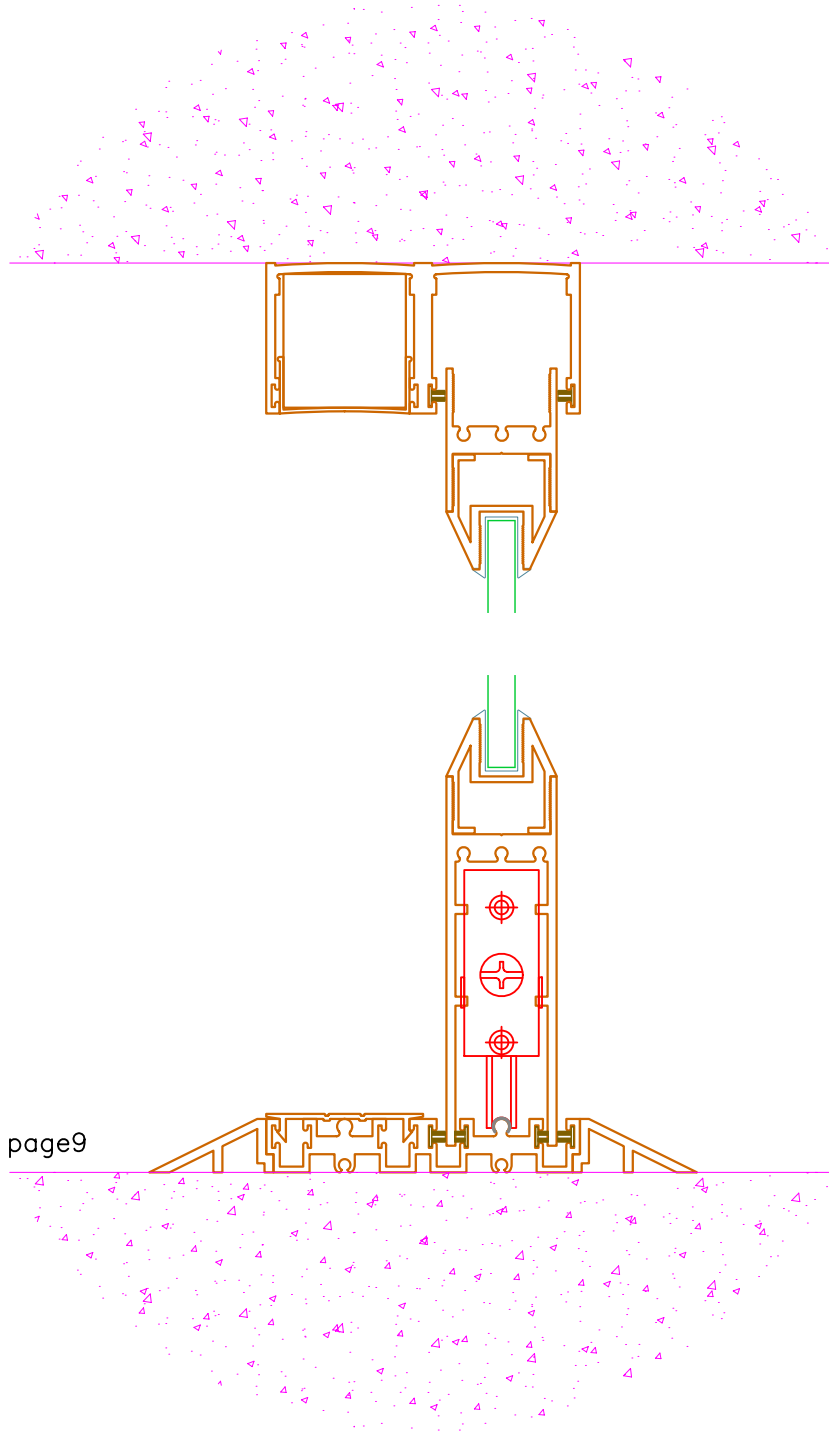
SCALE **XXXXX**

DATE **2/22/2011**

DRAWING NAME  
**MAX Slider details 3-8 glass.dwg**

DRAFTERPERSON **P**





page9

**PRL GLASS SYSTEMS INC.**  
 Web Site: [www.prlglass.com](http://www.prlglass.com) [www.prlaluminum.com](http://www.prlaluminum.com)

Telephone : (877) 775-25856 251 Mason Way  
 Fax No. : (626) 968-95256 City of industry, C.A.

TITLE **MAX Slider**

**details**

MAX Slider  
 XO  
 bottom rolling  
 vertical section  
 3/8" tempered glass

02-22-11



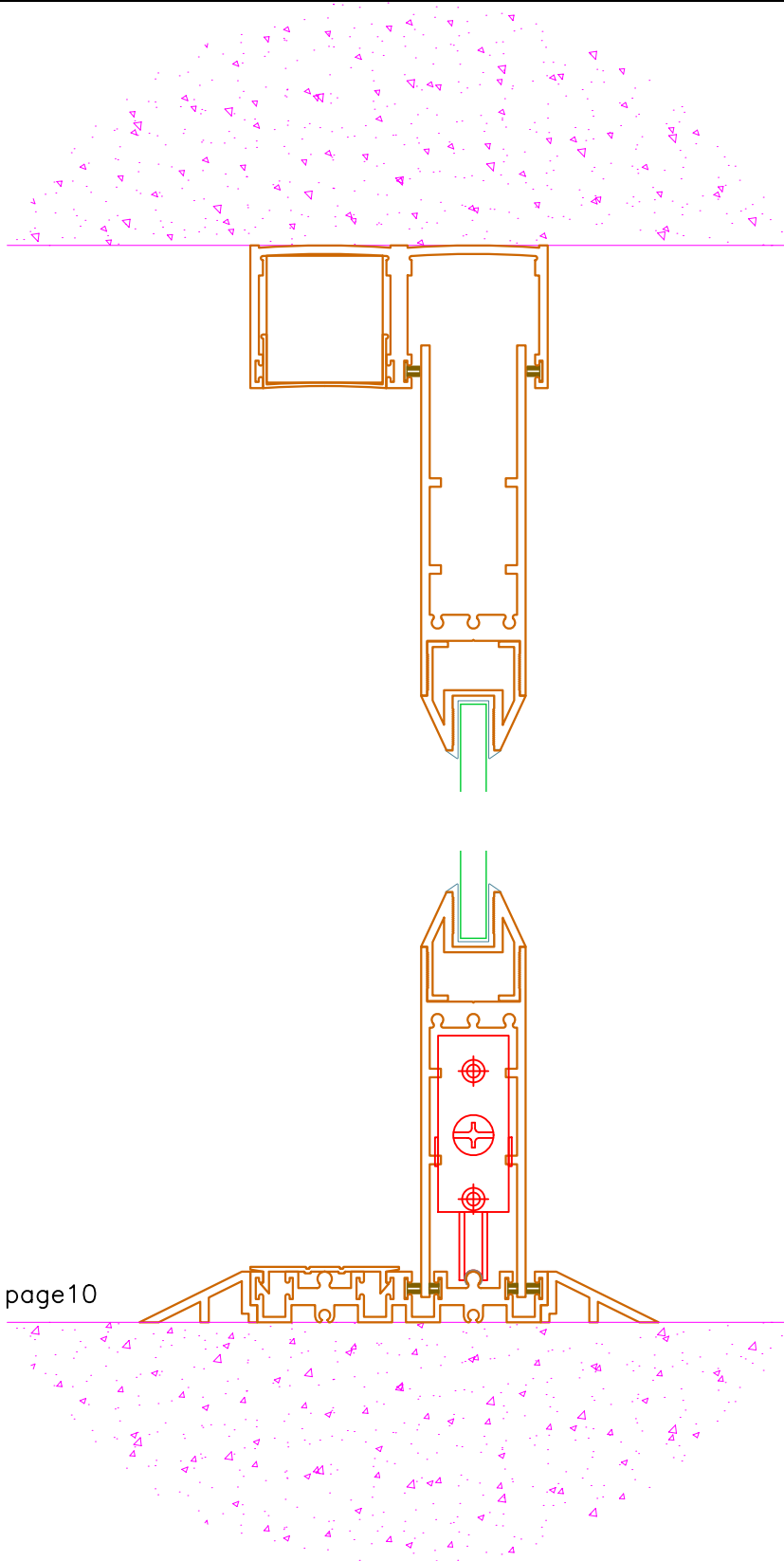
SCALE **XXXXX**

DATE **2/22/2011**

DRAWING NAME  
**MAX Slider details 3-8 glass.dwg**

DRAFTPERSON **P**





**PRL GLASS SYSTEMS INC.**

Web Site: [www.prlglass.com](http://www.prlglass.com)

[www.prlaluminum.com](http://www.prlaluminum.com)

Telephone : (877) 775-25856  
 Fax No. : (626) 968-95256

251 Mason Way  
 City of industry, C.A.

TITLE **MAX Slider**  
**details**

MAX Slider  
 XO  
 bottom rolling  
 vertical section  
 3/8" tempered glass

02-22-11



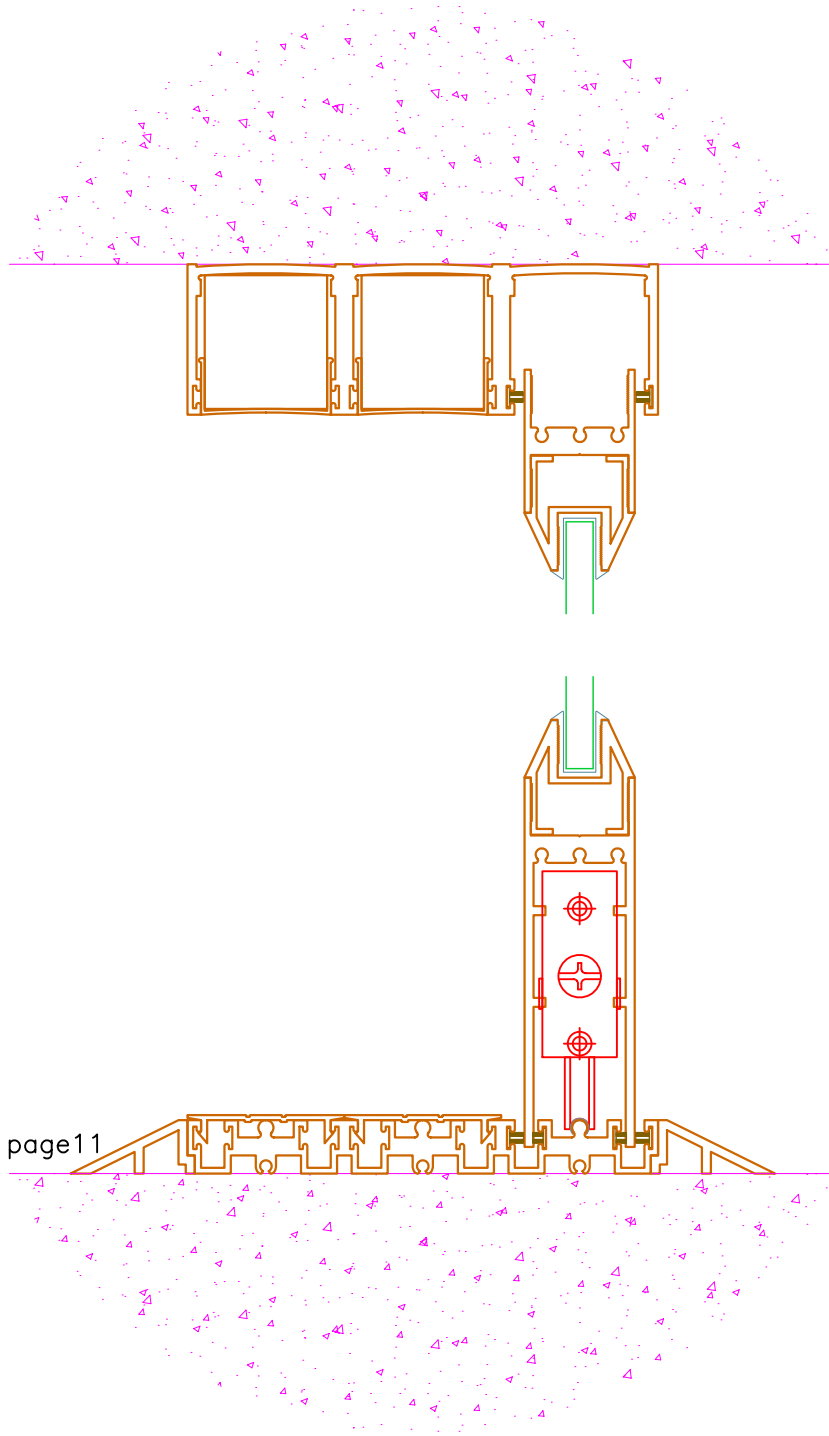
SCALE **XXXXX**

DATE **2/22/2011**

DRAWING NAME  
**MAX Slider details 3-8 glass.dwg**

DRAFTPERSON **P**





# PRL GLASS SYSTEMS INC.

Web Site: [www.prlglass.com](http://www.prlglass.com)

[www.prlaluminum.com](http://www.prlaluminum.com)

Telephone : (877) 775-25856  
Fax No. : (626) 968-95256

251 Mason Way  
City of industry, C.A.

TITLE **MAX Slider**

**details**

MAX Slider  
XXO

bottom rolling  
vertical section  
3/8" tempered glass

02-22-11



SCALE **XXXXX**

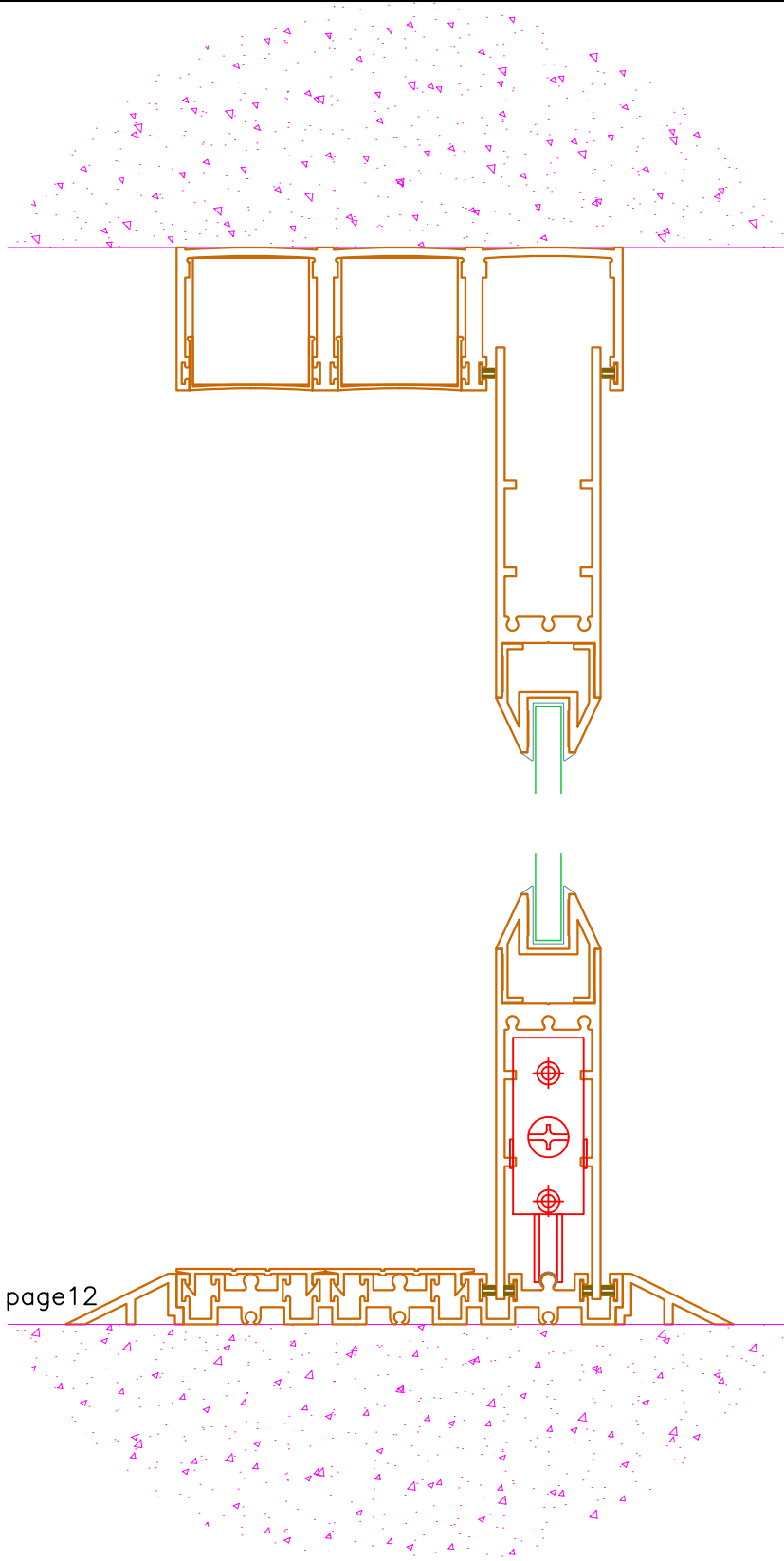
DATE **2/22/2011**

DRAWING NAME

**MAX Slider details 3-8 glass.dwg**

DRAFTPERSON **P**





**PRL GLASS SYSTEMS INC.**

Web Site: [www.prlglass.com](http://www.prlglass.com)

[www.prlaluminum.com](http://www.prlaluminum.com)

Telephone : (877) 775-25856  
 Fax No. : (626) 968-95256

251 Mason Way  
 City of industry, C.A.

TITLE **MAX Slider**

details

MAX Slider  
 XXO

bottom rolling  
 vertical section  
 3/8" tempered glass

02-22-11



SCALE **XXXXX**

DATE **2/22/2011**

DRAWING NAME

**MAX Slider details 3-8 glass.dwg**

DRAFTPERSON **P**

