

**MODEL 340**

**Application**

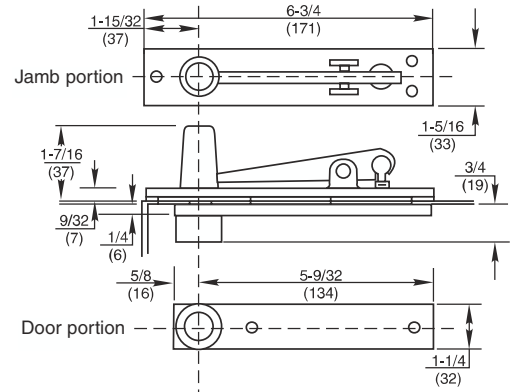
Fully Concealed  
Non-handed



**Product Description & Features**

- Standard top pivot for Models 21, 26, 28, 30 and 40 floor closers
- Walking beam-type pivot—1/2"(13mm) diameter pivot pin with 3/4"(19mm) engagement
- Oil-impregnated sintered bronze bearing
- Completely concealed when door is closed
- Available with longer than standard pivot pins. Increments are 1/4"(6mm), 1/2"(13mm), 3/4"(19mm) only
- Furnished with wood and machine screws
- For taller doors use top pivot 345 instead

**Technical Information**



[\(Click here to view template\)](#)

**MODEL H340**

**Application**

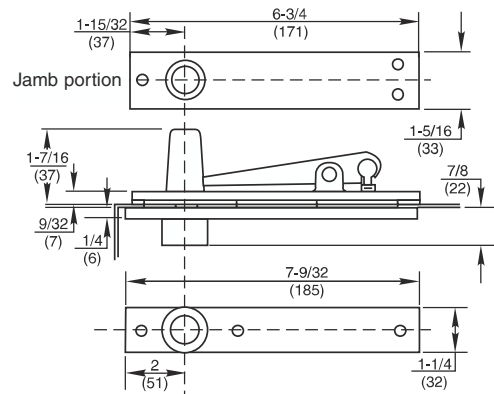
Fully Concealed  
Heavy-Duty  
Non-handed



**Product Description & Features**

- Standard top pivot for Models H28 and H40 Series floor closers
- Walking beam-type pivot—11/16"(17mm) diameter pivot pin with 3/4"(19mm) engagement
- Heavy-duty needle bearing
- Completely concealed when door is closed
- Available with longer than standard pivot pins. Increments are 1/4"(6mm), 1/2"(13mm), 3/4"(19mm) only
- Furnished with wood and machine screws
- For taller doors use top pivot H345 instead

**Technical Information**



[\(Click here to view template\)](#)